

*Peak District*  
**Local Access Forum**



Mike Williams Photography

## Contact details

If you would like to learn more about the work of the Forum, please contact:

### **Mike Rhodes**

Access and Rights of Way Manager  
Peak District National Park Authority  
Aldern House, Baslow Road  
Bakewell, Derbyshire, DE45 1AE

Phone: 01629 816289

e-mail: [mike.rhodes@peakdistrict.gov.uk](mailto:mike.rhodes@peakdistrict.gov.uk)

### **Gill Millward/ Claire O'Reilly**

Countryside Access Improvement Officer (job share)  
Derbyshire County Council  
Shand House, Dale Road South,  
Matlock, Derbyshire DE4 3RY

Phone: 01629 539656

e-mail: [gill.millward@derbyshire.gov.uk](mailto:gill.millward@derbyshire.gov.uk)

Full details of the Forum, its reports, minutes from meetings and information on members, is published on the website: <http://www.peakdistrict.gov.uk/access>

---

## Contents

Chair's Introduction .....	page 3
Purpose of the Forum .....	page 4
Membership of the Forum.....	page 5
Meetings and Major Issues for the Forum in 2010.....	page 6
The Year Ahead .....	page 12
Financial Statement.....	page 13
Member Details and Attendance .....	page 15

## Chair's Introduction

For many people that live and work in the Peak District National Park there are more benefits than probably most people recognise. Every year millions of visitors come in search of that special magic that can only be experienced in a National Park.

Fortunately the Local Access Forum helps us consider and recognise the importance of access for everyone to enjoy whether it is for participating in recreational activities or managing the landscape.

The Forum is now looking at the first review of Derbyshire County Council's Rights of Way Improvement Plan. Since its approval in 2007, there has been good progress which has been appreciated by users across the County. The Forum has also been involved in the National Park Authority's Recreation Strategy, launched in 2010.

Probably one of the most successful partnerships has been between Derbyshire Police, the Peak District National Park and motor vehicle users. An initiative called "Operation Blackbrook" has seen "off roaders" have a better understanding of the needs and benefits of appropriate behaviour in the countryside.

The last 12 months has seen many changes which could be seen by many people as threats to the way people access the Countryside. I prefer to see used the term opportunities. The challenge is for Local Access Forum members to engage with people to share the vision for access into the countryside.

Looking back over the last 12 months, I would like to thank all the Members for their commitment and contributions, and in particular pay tribute to Andrew McCloy who stepped down as Chair during 2010. I would also like to thank the officers from both the Peak District National Park Authority and Derbyshire County Council for their ongoing support.

*Edwina Edwards*  
*Chair, Peak District Local Access Forum*





*Outgoing chair Andrew McCloy receives thanks from NPA chair Narendra Bajaria.*

## Purpose of the Forum

The Peak District Local Access Forum (PDLAF) is a statutory body, appointed jointly by the Peak District National Park Authority (PDNPA) and Derbyshire County Council (DCC). It covers the National Park area and the countryside of north-west Derbyshire around Buxton, New Mills and Glossop (refer to back cover for geographical coverage).

This appointment is a requirement of Section 94 of the Countryside and Rights of Way Act 2000, which states that the purpose of the Forum is;

“To advise the appointing authorities on the improvement of public access for the purpose of open-air recreation and enjoyment of the area.”

In undertaking the above, the Forum has due regard to the needs of land management and of conserving the natural beauty of the area.

Details of the duties and responsibilities of the Forum are laid out in:

- The Countryside and Rights of Way Act (CROW) Act 2000
- Local Access Forums (England) Regulations 2007
- Guidance on Local Access Forums in England issued by the Secretary of State for Environment, Food and Rural Affairs.

All Forum meetings are open to the public and by prior arrangement members of the public may ask questions. Meetings are advertised on the National Park Authority’s website.

## Membership of the Forum

Membership of the Forum is reviewed regularly and appointments are made on renewable three-year terms. Recruitment is made on the basis of 'expressions of interest' made to the Authorities in response to adverts in the local press and direct mailing. Interviews of applicants are then held, to ensure that prospective members fulfil the requirements of the position.

The appointing Authorities are required to ensure a reasonable balance is made between the number of members from land owning, recreation, and local interests. Details of the current membership are included at the end of this report and on the National Park Authority's website.

In 2010, Andrew McCloy stood down as the Forum chair after six years and was replaced by Edwina Edwards. Mike Innerdale was replaced by John Thompson as Vice Chair. John Hall and Brenda Harrop joined the Forum. Ben Rayner replaced Cllr Chris Pearson as the National Park Authority appointee. Felicity Edmeston resigned due to pressure of work and Sue Fisher stepped down shortly before her appointment expiry date for family reasons.



*The Forum meets at Losehill Hall for the last time.*

## Meetings and Major Issues for the Forum in 2010

During 2010, the formal meetings of the Local Access Forum took place on the following dates:

**Thursday 1 April, Losehill Hall, Castleton**

**Thursday 17 June, Aldern House, Bakewell**

**Saturday 18 September, Losehill Hall, Castleton**

**Thursday 16 December, Losehill Hall, Castleton (postponed from Thursday 2 December)**

The following major issues were discussed:

### **1) Recreational Motor Vehicles in the Countryside**

The use of motorised vehicles in the countryside has continued to be a high priority area of work for the Forum throughout 2010. The subject was discussed at each of the four meetings in 2010 and has been backed up by the work of a sub-group in accordance with the National Park Authority's Recreational Motor Vehicle Strategy.

Of the 8 routes that had management plans developed for them in 2009, the 3 routes that were identified as the highest priority for action had £71,000 in funding secured from Derbyshire's Local Transport Plan (LTP) for capital works. Of the other 5 routes, 3 are being considered for Traffic Regulation Orders (TROs), and the remaining 2 are being closely monitored. Monitoring has revealed that levels of use are in decline and the two tracks are showing signs of regeneration. A further 7 routes were assessed for their sustainability in 2010 and management plans developed for them. Voluntary restraint measures are either in place or being considered for some of this second batch of priority routes.



The Forum also asked the National Park Authority to make a temporary TRO restricting use by motor vehicles for an 18 month period in respect of the Chapel Gate track, and this went out for public consultation on 10<sup>th</sup> December.

## **2) Open Access Issues**

Access to open country under the Countryside and Rights of Way Act continues to be a high profile issue discussed at Forum meetings. Terry Howard gave a presentation on Open Access to Forum members in April, highlighting future issues for the Forum to address.

During 2010, the Restrictions Review sub-group has been consulted on the remaining reviews of long-term directions. In December the Sub-group was re-established as an Access Sub-group which will meet as and when required to deal with wider open access issues as well as restrictions.

Improvements continue to be sought on access to access land and the availability of information. The Forum was keen to be involved in any review of mapping.

## **3) Derbyshire County Council's Rights of Way Improvement Plan**

The Forum has been given regular updates on the progress towards delivery of Derbyshire County Council's Rights of Way Improvement Plan (RoWIP). A detailed monitoring report for 2009/10 was also presented at the June meeting, which included information on updating and digitising the Definitive Map and Statement, improving publicity for the network and promoting horse riding and cycling in Derbyshire. Members were pleased to see that progress had been made with 90% of the proposed actions.

Further information about Derbyshire's Rights of Way Improvement Plan and progress on it can be found on the County Council's website:

[http://www.derbyshire.gov.uk/leisure/countryside/access/rights\\_of\\_way/improvements/](http://www.derbyshire.gov.uk/leisure/countryside/access/rights_of_way/improvements/)

## **4) Derbyshire's Draft Local Transport Plan 2011-2026 (LTP3) and proposed changes to public transport**

A challenges and options paper went out for consultation with stakeholders in Spring 2010, asking for people's views about how best to balance the transport goals for Derbyshire and which measures they supported to address the challenges identified through local surveys etc. A Forum sub-group met to discuss the paper and provide the County Council with a formal response.

At the December meeting, Steve Cannon, Transport and Accessibility Manager, Derbyshire County Council, gave a presentation to Forum members on the draft Derbyshire Local Transport Plan which had been prepared following the Spring consultation. The plan contains five transport goals: tackling climate change; supporting economic growth; promoting equality of opportunity; contributing to better safety security and health and improving quality of life and promoting a healthy natural environment. It was suggested that the Forum send a formal response and a sub-group was set up to facilitate this.

Forum members were also informed about the Derbyshire County Council consultation on proposed changes to public transport. It was explained that there are huge pressures on spending on public transport and that there will be some very difficult decisions to be made. Comments from members were encouraged on specific proposals, the overall approach and the impact of proposed changes.

### 5) Peak District National Park Authority's Recreation Strategy



The Authority's Recreation Strategy was launched in Buxton on 24 April 2010 and a number of forum members attended, including the Peak District LAF Chair. A Strategic Management Group has been set up to review progress on the Strategy and provide new ideas to drive it forward. The PDLAF Vice Chair will sit on this group and report back to the Forum. Task teams have also been set up to pursue specific projects, the first two of which, focusing on Access to Water and Healthy Lifestyles, met for the first time in September 2010.

Progress on the 2010-11 Strategy Action Plan was presented to Forum members at the December meeting.

### 6) Horse Riding in the Peak District

Charlotte Gilbert gave a presentation on the access perspective of horse riding to Forum members at the June meeting. It was stated that information on Bridleways in the National Park was confusing and misleading, and that although the National Park Authority website had one page specifically for horse riders, there was much more information on cycling.

Forum members discussed the unique Peak District multi user trails and the huge opportunity for riders and cyclists to work together to improve the bridleway network.

There are several actions in the Derbyshire Rights of Way Improvement Plan to address the needs of horse riders – the main aim is to identify gaps in the existing network so circular routes can be developed. Continuing work to establish the Pennine Bridleway National Trail and a network of multi user Greenway routes should help provide the focus for a number of circuits. Derbyshire County Council has also recently produced a 'Horse Ride Derbyshire' leaflet and is developing a horse riding web page and the Peak District National Park Authority Recreation Strategy contains a section focusing on horse riding.



## 7) New projects

Forum members were updated on progress on two new projects:

- The Pedal Peak District project – a £2.25 million project managed by the National Park Authority aiming to encourage more people to cycle, promote better public transport links to cycling routes and to create a new cycle route from Bakewell to Buxton. Actions progressed in 2010 included reaching out to individuals, groups and schools to offer training and improve cycling confidence.
- The Black Harry Trails Project – a project in the Longstone Edge area aiming to improve and create routes for horse riding and mountain-biking and to increase recreation opportunities for the less able, elderly and those with young families in an area affected by mineral working. Funding was secured in autumn 2010 to carry out physical improvement works on three routes and to improve signage and interpretation/promotion of the project area.



## 8) Walking for Health

Rob Gornall, Natural England Walking for Health Co-ordinator for Derbyshire, gave a presentation to Forum members on the Walking for Health Project. This project aims to get more people out into open space by promoting organised walking for health benefits. The target group is predominantly sedentary people – reaching people in areas of high health deprivation in Derbyshire. Walking is seen as a stepping stone to other physical activity.

Forum members were asked to pass on the message about the project and to contact Rob with walk suggestions and feedback.

## 9) Future size and shape of the Peak District National Park Authority

An Authority paper on the future size and shape of the National Park Authority was circulated to Forum members and discussed at the September meeting. A letter summarising the many discussion points on this item was sent to the Chair of the National Park Authority, emphasising the Forum's view that the importance of the second national park purpose (to promote understanding and enjoyment of the National Park) should not be overlooked.

## **10) Formal Consultations**

The Forum has been consulted on the following:

- The Natural Environment White Paper discussion document 'An Invitation to Shape the Nature of England' (Defra)
- Consultation on the Governance Arrangements for the National Parks and the Broads (Defra) with a response made to Defra and the National Park Authority.
- Derbyshire Local Transport Plan 2011-2026 Local transport futures: challenges and options consultation April 2010 (Derbyshire County Council)

A formal review of the England Access Forum was undertaken in 2010. A consultation letter from the EAF Chair and Natural England was circulated and the Forum made a collective response via the Chair.

## **11) Training and Liaison**

Some Forum members attended an East Midlands Regional Training Event which covered topics such as working in partnership with stakeholders and consensus building approaches. Forum members also attended a training day at Nottingham, organised by Natural England and Planning Aid that looked at how LAFs can engage with the planning system and make sure that access issues get proper consideration. A site visit was also undertaken to look at the proposed Black Harry Trails Project area, following the June meeting.

The Forum Chair attended a regional meeting of East Midlands LAF Chairs in Leicester, at which there was an update from Natural England's lead recreation specialist in the East Midlands.

Forum members attended consultation events organised by the National Trust and RSPB in July and August 2010 regarding the future management of the Estate once the partnership takes over the lease from the National Park Authority.



*Sue Smith showing Local Access Forum members plans for the Black Harry Trails project.*



*Cyclists on the Monsal Trail*

## The Year Ahead

**Some of the likely priorities for the work of the Forum in 2011 are outlined below.**

- Developing improvements to open access
- Offering advice in relation to the disposal of publicly owned land
- Involvement in the delivery of the National Park Authority's Recreation Strategy and task groups
- Climate change and its impact on access and recreation
- Ongoing work on managing recreational motor vehicles in the countryside
- Ongoing development of codes of respect for users of the rights of way and access network
- Input to Derbyshire's third Local Transport Plan (LTP3)
- Monitoring progress on delivery of Rights of Way Improvement Plans
- Contribution to the review of Derbyshire's Rights of Way Improvement Plan
- Greenways, Access for All and other measures for inclusive access
- Public transport links
- Contributing to projects such as Pedal Peak and Black Harry Trails Project
- Issues relating to specific recreation types such as mountain bikers, horse-riders and water-based activities
- Ongoing liaison with neighbouring Local Access Forums
- Working with adjacent Access and Highway Authorities on shared interests
- Further training in conjunction with Natural England and others
- Continue to raise the profile of the Local Access Forum among a wider audience
- Encourage more representation from officers of the National Park Authority and the constituent authorities and from the general public at meetings

## Dates of Meetings 2011

(to be confirmed)

Saturday 26 March – Moorlands Discovery Centre, Longshaw Estate

Thursday 16 June – Aldern House, Bakewell

Saturday 24 September - Moorlands Discovery Centre, Longshaw Estate

Thursday 1 December – Aldern House, Bakewell



*Upper Derwent*

## Financial Statement

Members' Travel	£746.03
Room hire, refreshments & lunches	£1630.11
Annual Report	£140
Other	£ 40
<b>TOTAL</b>	<b>£2,556.14</b>

*Expenditure incurred is met by the National Park Authority's access budget with a contribution of £1832 from Derbyshire County Council towards administration costs.*

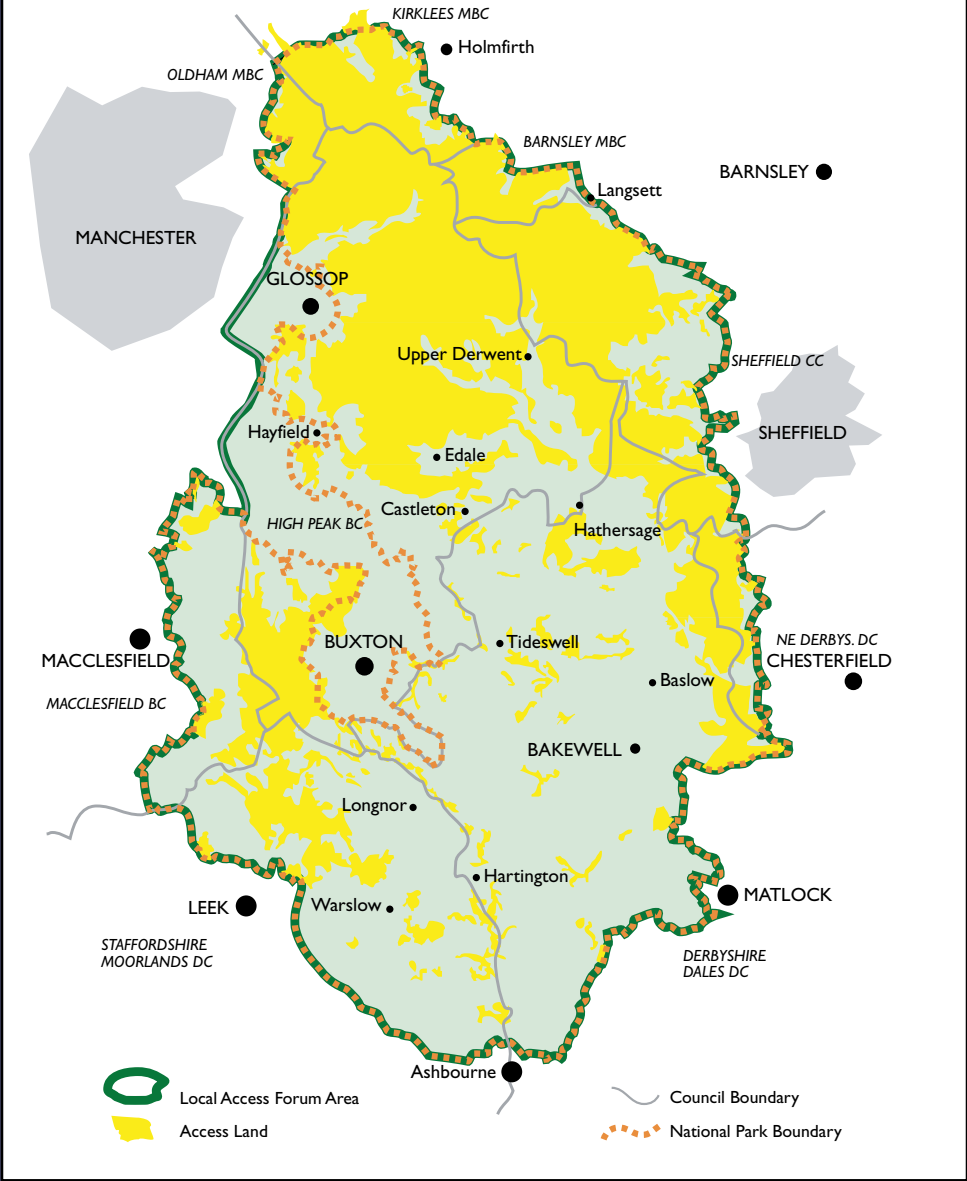


L-R back: Henry Folkard, James Kellie, Geoff Nickolds, John Thompson, Mike Innerdale, Charlotte Gilbert, Terry Howard, Jon Clennell, Andrew McCloy, Sue Weatherley,  
L-R front: Mike Johnson, Andrew Murley, Richard Entwistle,

## Member Details and Attendance

Member	Background and Interests	Appointment expiry date	1/4/10	17/6/10	18/9/10	16/12/10
Edwina Edwards (Chair from Sept 2010)	Community transport, Girl Guiding UK, walking, cycling, fell running	Sept 2012	✓	✓	✓	✓
Andrew McCloy (Chair until Sept 2010)	Freelance outdoors writer; walker; local community	Aug 2012	✓	✓	✓	✗
John Thompson (Vice-chair from Sept 2010)	Partnerships in recreation and education	June 2012	✓	✓	✓	✓
Jon Clennell	Outdoor pursuits, local community	Dec 2011	✓	✓	✗	✓
Bob Berzins	Fell running, conservation	June 2013	✓	✗	-	✓
Felicity Edmeston	Horse riding, local community, conservation	Resigned Sept	✗	✗	✗	-
Richard Entwistle	Motor vehicle users	Dec 2013	✓	✓	✓	✓
Sue Fisher	Mountain biking	Resigned Sept	✗	✗	✗	-
Henry Folkard	Climber; conservation	Aug 2012	✓	✓	✓	✓
Charlotte Gilbert	Land manager; horse rider	Dec 2011	✗	✓	✓	✓
John Hall	Farming	Nov 2013	-	-	-	✓
Brenda Harrop	Farming	Nov 2013	-	-	-	✗
Terry Howard	Walker, access campaigner	Aug 2012	✓	✓	✓	✓
Mike Innerdale (Vice-chair until Sept 2010)	Recreation & conservation management, National Trust	June 2013	✓	✓	✓	✗
Mike Johnson	Walking, climbing, paragliding	June 2012	✓	✓	✓	✓
James Kellie	Landowner, holiday accommodation	Dec 2011	✓	✓	✓	✓
Andrew Murley	Conservation, social inclusion	Dec 2013	✓	✓	✓	✗
Geoff Nickolds	Recreation and conservation management	Aug 2011	✓	✓	✓	✓
Chris Pearson	National Park Authority appointee	n/a	✗	✗	-	-
Richard Peart	Outdoor education	Aug 2012	-	✓	✓	-
Ben Rayner	National Park Authority appointee	n/a	-	-	✓	✓
Sue Weatherley	Ramblers, wildlife	June 2012	✓	✓	✓	✓
Jean Wharmby	Deerbyshire County Council	n/a	✗	✗	✗	✗

# Geographical Coverage of the Peak District Local Access Forum



[www.peakdistrict.gov.uk](http://www.peakdistrict.gov.uk)

Aldern House, Baslow Road, Bakewell,  
Derbyshire, DE45 1AE T: 01629 816200  
E: [customer.service@peakdistrict.gov.uk](mailto:customer.service@peakdistrict.gov.uk)

[www.derbyshire.gov.uk](http://www.derbyshire.gov.uk)

Derbyshire County Council, County Hall,  
Matlock, Derbyshire DE4 3AG T: 0845 605  
8058 E: [contact.centre@derbyshire.gov.uk](mailto:contact.centre@derbyshire.gov.uk)