



Pennine NATIONAL TRAILS

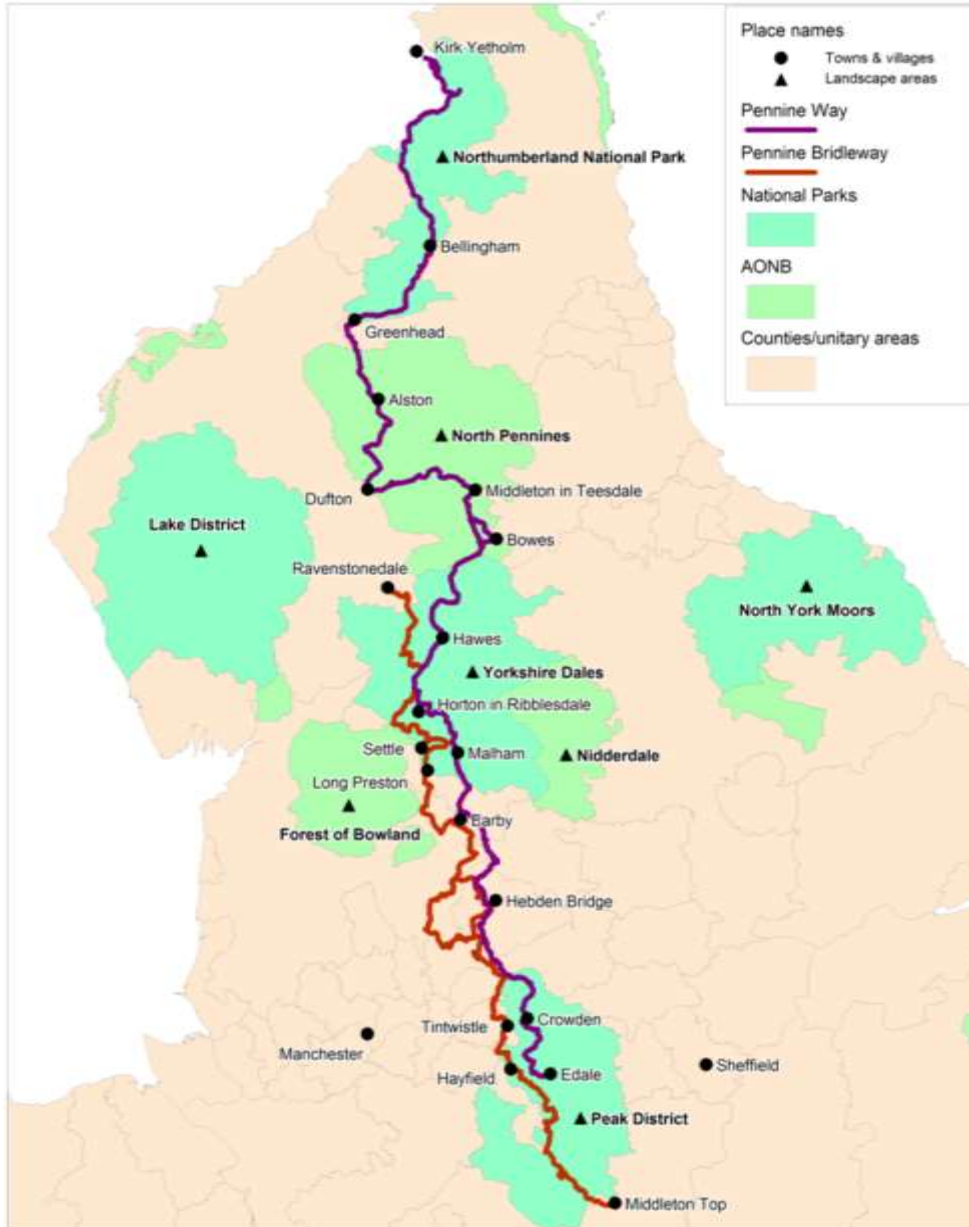
Pennine Way & Pennine Bridleway

The Pennine National Trails

Heather Procter
(Partnership Manager)



Pennine Way & Pennine Bridleway



Pennine Way

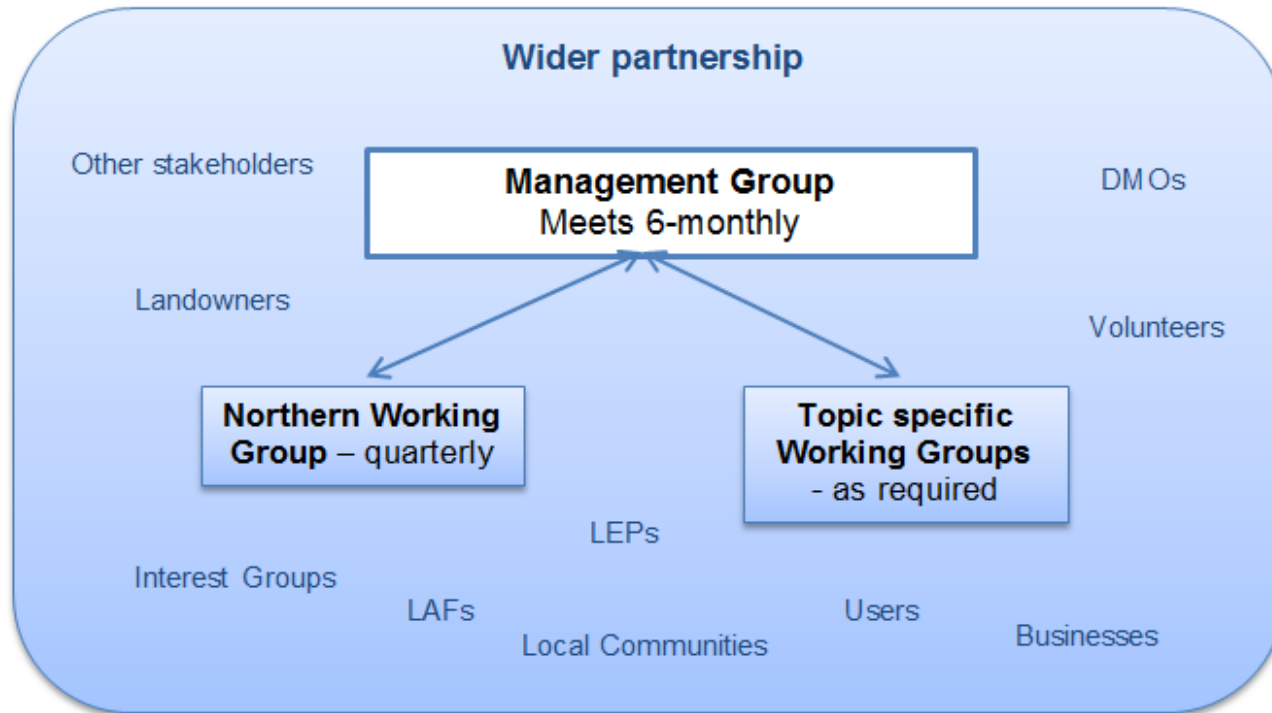
- 268 miles
- Opened 1965
- Over 300,000 users recorded 2015-16
- Estimated 2,000 end-to-end users each year

Pennine Bridleway

- 205 miles
- Opened in stages 2002-2012
- Limited usage data (localised)
- Long distance users mainly mountain bikers (anecdotal)
- Horse riders & walkers mainly local use
- Not completed at Glossop
- Approval for extension to Byrness, Northumberland



Management structure




- 19 organisations currently represented on Management Group (16 Highway Authorities)
- Northern Working Group engages LAFs, volunteers, and interest groups
- Yorkshire Dales National Park is lead authority

Funding

- Natural England grant for **maintenance**
 - £350,000 per year, issued to partnership
 - Covers 75% of costs
 - Secure £128,250 in match funding last year
- Partners submit applications, decisions on allocations made by Partnership
 - Bids for:
 - Staff (inc. materials & equipment) to carry out maintenance
 - Contractors to carry out larger projects
 - Work with volunteers



Staff

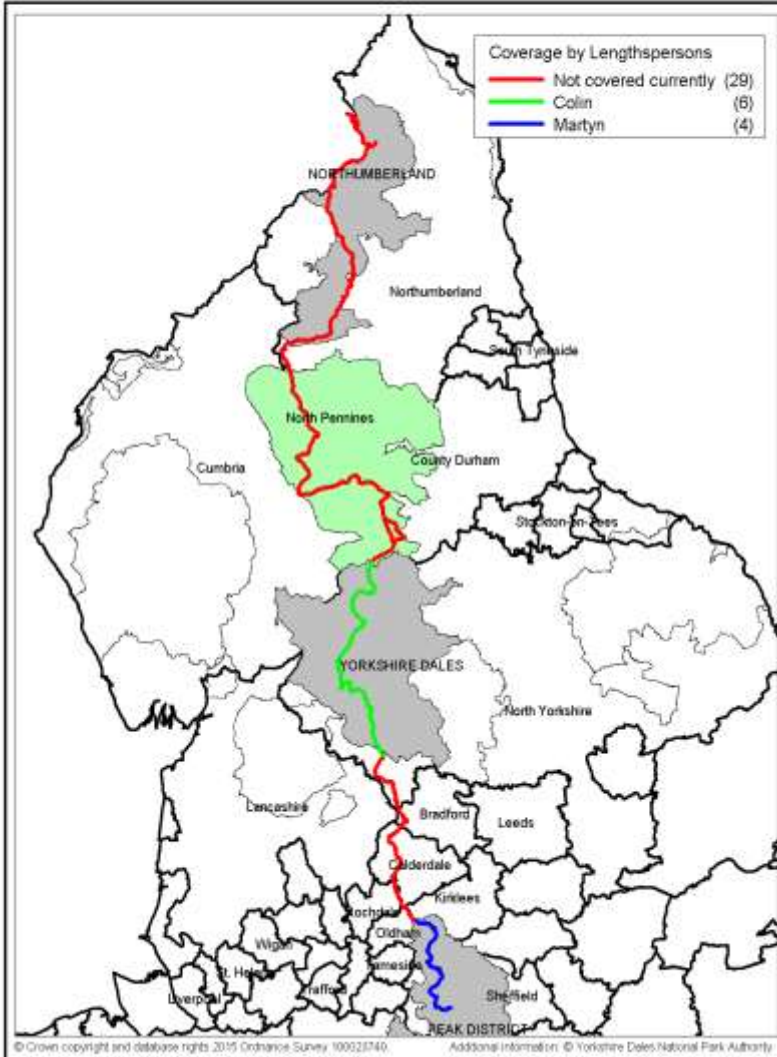
- 
- A group of five people (three men and two women) standing in a grassy field with rolling hills in the background. They are wearing dark clothing, some with logos. The man on the far right is wearing a cap and shorts. The background shows a clear blue sky and green hills.
- Partnership Manager – employed by Lead Authority (Yorkshire Dales National Park Authority), fully funded by maintenance grant. Replaced 2 previous Trail Officers.
 - Also part-funded through maintenance grant:
 - Pennine Way Ranger (Peak District)
 - Pennine Way Ranger (Yorkshire Dales)
 - Pennine Bridleway Ranger (Derbyshire)
 - Pennine Bridleway Ranger (Lancashire, Calderdale & Rochdale)
 - Pennine Bridleway Ranger (Yorkshire Dales)



Lengthspersons on Pennine Way

Scale 1:3172173

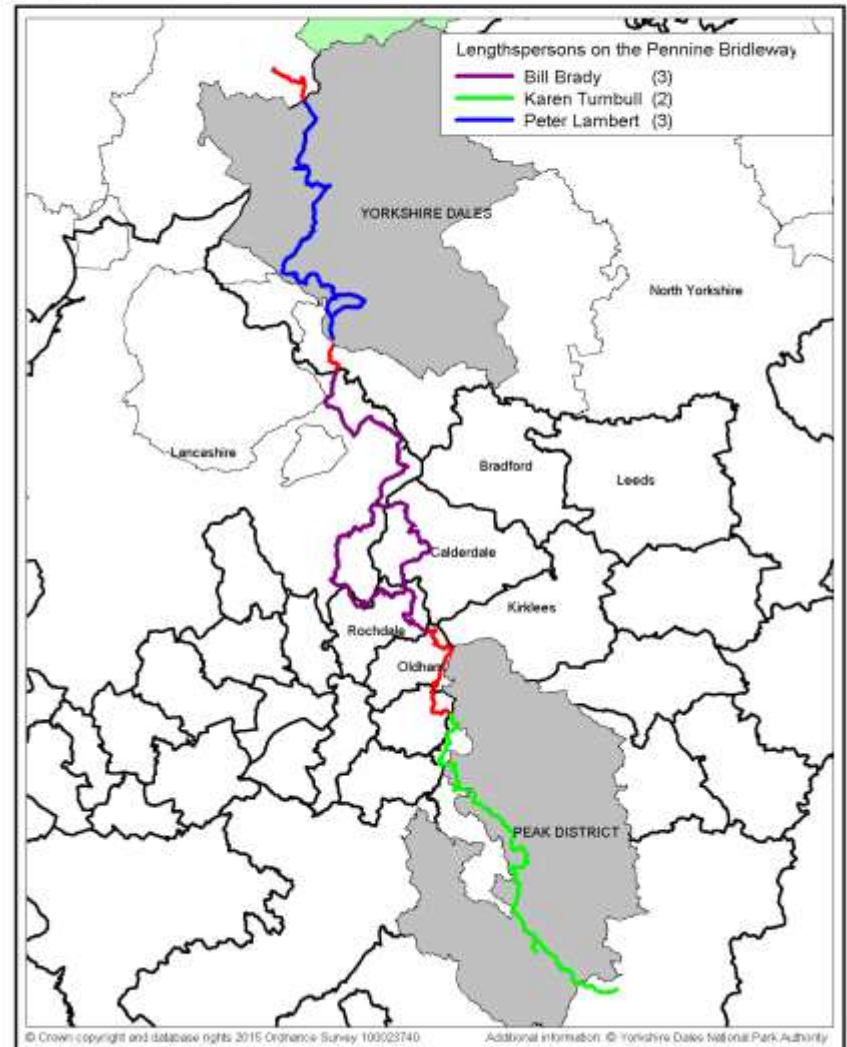
Compiled by Heather Procter on 17 July 2015



Lengthspersons on Pennine Bridleway

Scale 1:2278428

Compiled by Heather Procter on 17 July 2015



Trail condition

- Pennine Way

Category	Issues in 2015	Issues in 2016
Fingerposts	33	15
Gates	27	10
Stiles	21	4
Surface	83	86
Total all categories	237	204
Peak District	13	8

- Online survey results:

- 68% rated the trail as excellent, 29% good
- 57% said way marking was about right, 37% said there was not enough in some areas
- 90% thought the trail surface was as good or better than they expected

Trail condition

- Pennine Bridleway

Category	Issues in 2015	Issues in 2016
Fingerposts	91	95
Gates	112	92
Surface	91	94
Drainage	87	57
Total all categories	595	428
Peak District		23

- Online survey results:

- 55% rated the trail as excellent, 42% good
- 58% said way marking was about right, 40% said there was not enough in some areas
- 94% thought the trail surface was as good or better than expected

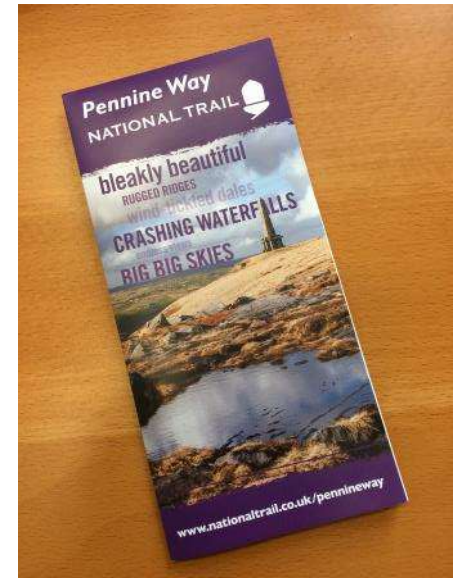
Working with volunteers

- Rangers have always worked regularly with volunteers
- Areas without Rangers struggle to involve volunteers
- Project in North Pennines to establish suitable system for working
 - ‘Champions’ (voluntary lengthspersons)
 - Work parties
 - Other types of volunteer e.g. communications
 - Is it sustainable? What funding is required to maintain it?



Promotion

- Walk Unlimited – official promotion partner
 - Website
 - Social media
 - Business membership
- Trail specific:
 - Pennine Way Facebook and Twitter
 - Press releases – print, radio, tv
 - Leaflets
- No grant budget for promotion. Instead we raise funds by:
 - Online sales e.g. old finger blades
 - Donations
 - Sponsorship/partnership e.g. Official Beer



The National Trail Family

- 16 National Trails (including ECP)
- Thinking about establishing a ‘National Association/Alliance’
 - A single voice to represent National Trails
 - Capable of political lobbying and promotion
 - National fundraising
 - Initial priority to secure core funding commitment from Natural England



THE NATIONAL TRAILS...

14



NATIONAL TRAILS

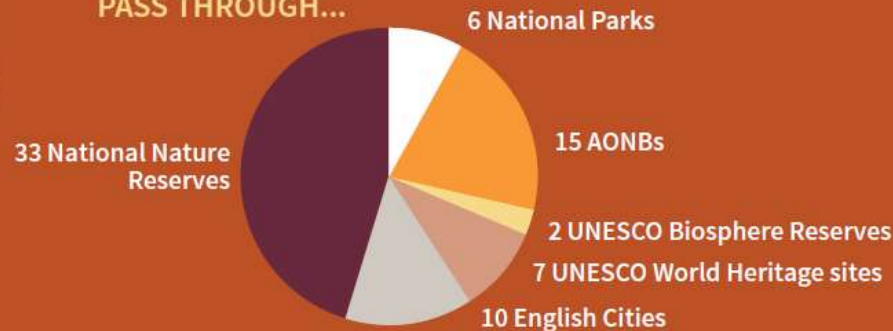
in England* stretches



2600 MILES / 4160 KM

*inc. England Coast Path

PASS THROUGH...



VISITORS

83m

day visits per year



GOVERNMENT SPENDING

on National Trails



VOLUNTEERS SPEND



£300k

NATIONAL TRAIL WEBSITES



4,260

Businesses supported

£533m

ADDED VALUE FUNDING

£1.6m

...Government funding levers in additional funds doubling spend.

WELLBEING



Left calm and relaxed

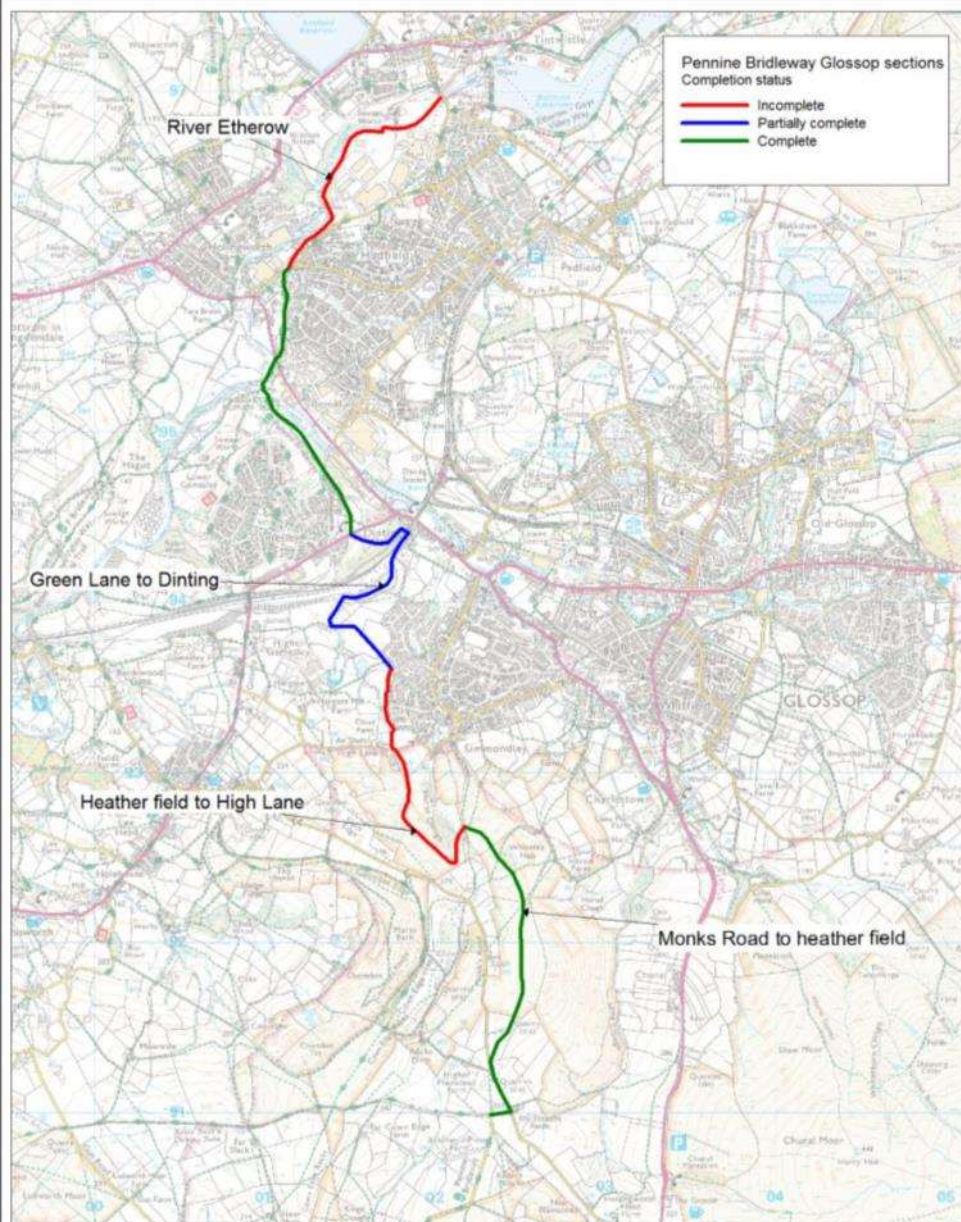
AWARD WINNING



Outstanding Contribution to Tourism (South West Coast Path)
Top 10 mountain bike routes in the world (South Downs Way)

WALKING & RIDING On National Trails





ay completion

- 4.9km to complete (Monk's Road to Tintwistle Bridge)
- Challenges:
 - Terrain
 - Land ownership
 - Road crossings
 - Finances

Case for completion

- Trail cannot be properly used as long distance route (especially by horse riders)
- The 'gap' puts off all users (e.g. mountain bikers forced to use roads)
- Trail cannot be promoted properly
- Local users cannot benefit fully from trail
- Glossop missing out on visitor spend
 - Sett Valley Trail at Hayfield attracted nearly 60,000 walkers & cyclists in 2016
 - High Peak Trail around Parsley Hay attracts around 140,000 walkers, cyclists & riders each year
 - More of these users could be directed north if the PBW was completed

Pennine Bridleway northern section

- 137 miles, Ravenstonedale to Byrness
- Approved by Secretary of State
- No funding available from NE to create or maintain
- Being created in small chunks using external funds e.g. Eden Valley Loops



Any questions?

