



Peak District
LOCAL ACCESS FORUM

Annual Report 2011

CONTACT DETAILS

If you would like to learn more about the work of the Forum, please contact:

Mike Rhodes

Access and Rights of Way Manager
Peak District National Park Authority,
Aldern House, Baslow Road,
Bakewell, Derbyshire
DE45 1AE

Phone: 01629 816289

e-mail:

mike.rhodes@peakdistrict.gov.uk

Gill Millward / Claire O'Reilly

Countryside Access Improvement
Officer (job share)
Derbyshire County Council,
Shand House, Dale Road South,
Matlock, Derbyshire DE4 3RY

Phone: 01629 539656

e-mail:

gill.millward@derbyshire.gov.uk

Full details of the Forum, its reports, minutes from meetings and information on members, is published on the website:

<http://www.peakdistrict.gov.uk/access>



CHAIR'S INTRODUCTION

The past year has seen the development of sub groups to support the main work of the Local Access Forum (LAF). During the year members of the LAF have volunteered their time to respond to consultation documents and provided advice on rights of way and in particular the snares on Access Land. These working groups have been invaluable to enable the LAF to work in positive ways to meet tight deadlines that are often given to meet statutory requirements. Many thanks to everyone who has contributed.

Significant discussion, consultation and documentation has taken place concerning the motorised vehicle issue which has concluded with an agreed revised strategy. Again LAF members have provided constructive feedback at a number of different levels to find a suitable and appropriate way forward.

Looking back over the last 12 months, I would like to thank all the members for their commitment and contributions. I would also like to thank the officers from both the Peak District National Park Authority and Derbyshire County Council for their ongoing support.



Edwina Edwards
*Chair, Peak
District Local Access Forum*

CONTENTS

Chair's Introduction.....page 3
 Purpose of the Forum.....page 4
 Membership of the Forum.....page 5
 Meetings and Major Issues for the Forum in 2011page 5
 The Year Ahead.....page 9
 Financial Statement.....page 10
 Member Details and Attendance.....page 11

PURPOSE OF THE FORUM

The Peak District Local Access Forum (PDLAF) is a statutory body, appointed jointly by the Peak District National Park Authority (PDNPA) and Derbyshire County Council (DCC). It covers the National Park area and the countryside of north-west Derbyshire around Buxton, New Mills and Glossop (refer to back cover for geographical coverage).

This appointment is a requirement of Section 94 of the Countryside and Rights of Way Act 2000, which states that the purpose of the Forum is;

“To advise the appointing authorities on the improvement of public access for the purpose of open-air recreation and enjoyment of the area.”

In undertaking the above, the Forum has due regard to the needs of land management and of conserving the natural beauty of the area.

Details of the duties and responsibilities of the Forum are laid out in:

- The Countryside and Rights of Way Act (CRoW) Act 2000
- Local Access Forums (England) Regulations 2007
- Guidance on Local Access Forums in England issued by the Secretary of State for Environment, Food and Rural Affairs.

All Forum meetings are open to the public and by prior arrangement members of the public may ask to speak at the meetings. Meetings are advertised on the National Park Authority's website.



Peak Park Conservation Volunteers Working Parties at Black Harry Lane (left) and Taylor Lane (above)

MEMBERSHIP OF THE FORUM

Membership of the Forum is reviewed regularly and appointments are made on renewable three-year terms. Recruitment is made on the basis of 'expressions of interest' made to the Authorities in response to adverts in the local press and direct mailing. Interviews of applicants are then held, to ensure that prospective members fulfil the requirements of the position.

The appointing Authorities are required to ensure a reasonable balance is made between the number of members from land owning, recreation and local interests. Details of the current membership are included at the end of this report and on the National Park Authority's website.

In 2011 Clare Griffin, Adge Last, Jon Stewart and Ally Turner joined the Forum in October.

Mike Innerdale, Andrew Murley, Geoff Nickolds and Brenda Harrop all resigned during the year.

MEETINGS AND MAJOR ISSUES FOR THE FORUM IN 2011

During 2011, the formal meetings of the Local Access Forum took place on the following dates:

Thursday 26 March, Moorland Discovery Centre, Longshaw Estate

Thursday 16 June, Aldern House, Bakewell

Wednesday 12 October, Aldern House, Bakewell

Thursday 1 December, Aldern House, Bakewell

The following major issues were discussed:

I. Recreational Motor Vehicles on Unsealed Roads

The issue of recreational motor vehicles on unsealed roads and off-road has continued to be the major topic for the LAF, with detailed discussion at each meeting.

Route-specific issues were discussed, together with progress reports from officers on action to resolve issues of maintenance, signage and restraint. The Vehicles Sub-group made a number of site visits and provided detailed reports and advice.

The LAF made suggestions and were then consulted on the National Park Authority's review of its Strategy and Procedure for making Traffic Regulation Orders and provided a detailed response. LAF representatives also spoke at the Committee and Authority meetings when this was discussed and prior to that when an Experimental Traffic Regulation Order was proposed on Chapel Gate. The extra staff resources allocated by the Authority at the end of 2011 was welcomed.

2. Rights of Way Improvement Plans (RoWIP) and Third Local Transport Plan (LTP3)

Derbyshire County Council made regular detailed reports on work to progress the aims of the Rights of Way Improvement Plan. A detailed monitoring report was presented in June, which was welcomed by the LAF members.

Officers also reported on the work programme for the 2011/12 financial year, and the LAF was invited to comment on the preparation of DCC's revised ROWIP, which included a joint sub-group with members of the Derby and Derbyshire LAF.

A sub-group of the PDLAF met in January to produce a formal response to Derbyshire's draft Local Transport Plan (LTP3).

Oldham Council also reported on progress with its ROWIP.

3. Open Access Issues

Access to open country under the Countryside and Rights of Way Act continues to be a high profile issue discussed at Forum meetings.

In 2011, the Forum considered the issue of snares on access land. A presentation was given by Ben Rimington-Wilson of the Moorland Association and updates were provided by officers of discussions with moorland owners to reduce any risk to the public.

The Access Sub-group reported to the LAF having looked in detail at the impacts of snares on access land, the National Park Authority's review of its properties (see Asset Review below) and the proposed changes to the Forestry Commission.

Updates were given on access points, planned information improvements and the latest funding situation.

4. National Park Authority Asset Review

The Forum considered the current review of the NPA's properties, which includes significant areas of access land, and popular climbing crags. The LAF commented on the partnership lease for the Eastern Moors estate, and the Roaches estate and the possible sale of land at Edale, seeking reassurances that future arrangements would not be to the detriment of open access nor the National Park as a whole and opportunities should be taken to enhance and sustain access and recreation.

5. National Park Authority Management Plan

The Forum has been involved with commenting on the NPA's new Management Plan for the period 2012-16 and has been kept informed with progress. The plan will be formally launched in 2012.



Peak Park Conservation Volunteers, Washgates

6. Projects

Forum members were updated on the completion of two projects in 2011. The £2.25 million Pedal Peak District project has provided greatly increased opportunities for cycling and extended and opened up the Monsal Trail for a variety of users. The Black Harry Trails project has improved and created routes for horse-riding and mountain-biking in the Longstone Edge area.

7. Other key matters discussed:

- Accessibility mapping
- Mountain-biking conflicts
- Planning issues
- Sheffield Moors Partnership Project



Black Harry Trails launch

Formal Consultations

The Forum has responded to the following consultations:

- Application to restrict access - Moscar Estate
- National Park Management Plan consultation
- Review of the National Park Authority Strategy for the management of Recreational Motor Vehicles
- DCC review of Policy on Recreational Motor Vehicles in the Countryside
- Derbyshire's Draft Local Transport Plan (LTP3)
- DCC review of its Rights of Way Improvement Plan 2007-2012
- Review of the Countryside Code (Natural England)
- Moors for the Future strategy review
- Dept for Communities and Local Government Review of Statutory Duties

Training and Liaison

The LAF has been represented by members at:

- Annual Recreation Partnership meeting
- National Park Management Plan Steering Group
- Recreation Strategy Steering Group
- Recreation Strategy Task Groups
Youth Education Strategy Group
Water Recreation Task Group
Health Task Group
- Regional LAF Chairs meetings
- NPA Trails Management Plan Steering Group
- National Park Transport Working Group
- Peak District Green Lanes Forum



Mountain biking at Mam Tor

THE YEAR AHEAD

Some of the likely priorities for the work of the Forum in 2012 are outlined below.

- Developing improvements to open access land
- Offering advice in relation to the disposal and future management of publicly owned land
- Involvement in the delivery of the National Park Authority's Recreation Strategy and task groups
- Input and advice on the content and delivery of the Sustainable Transport Action Plan for the Peak District
- On-going work on managing recreational motor vehicles in the countryside
- Monitoring progress on delivery of Rights of Way Improvement Plans
- Contribution to the review of Derbyshire's Rights of Way Improvement Plan
- Greenways, Access for All and other measures for inclusive access
- Cycling Strategy work and future opportunities for the Peak District
- Public transport links
- Issues relating to specific recreation types such as mountain bikers, horse-riders and water-based activities
- On-going liaison with neighbouring Local Access Forums
- Working with adjacent Access and Highway Authorities on shared interests
- Further training in conjunction with Natural England and others
- Continue to raise the profile of the Local Access Forum among a wider audience
- Encourage more representation from officers of the National Park Authority and the constituent authorities and from the general public at meetings
- Support the work of the LAF Regional Co-ordinator and involvement in the "huddle" for LAF's

DATES OF MEETINGS 2012

Thursday 22 March – Moorlands Discovery Centre, Longshaw Estate

Thursday 14 June – Aldern House, Bakewell

Thursday 27 September – Aldern House, Bakewell

Thursday 6 December – Losehill Hall, Castleton (TBC)

FINANCIAL STATEMENT

Members' Travel	567.40
Room hire, refreshments & lunches	609.81
Annual Report	245.00
TOTAL	£1,422.21

Expenditure incurred is met by the National Park Authority's access budget with a contribution of £1,934.46 from Derbyshire County Council towards administration costs.



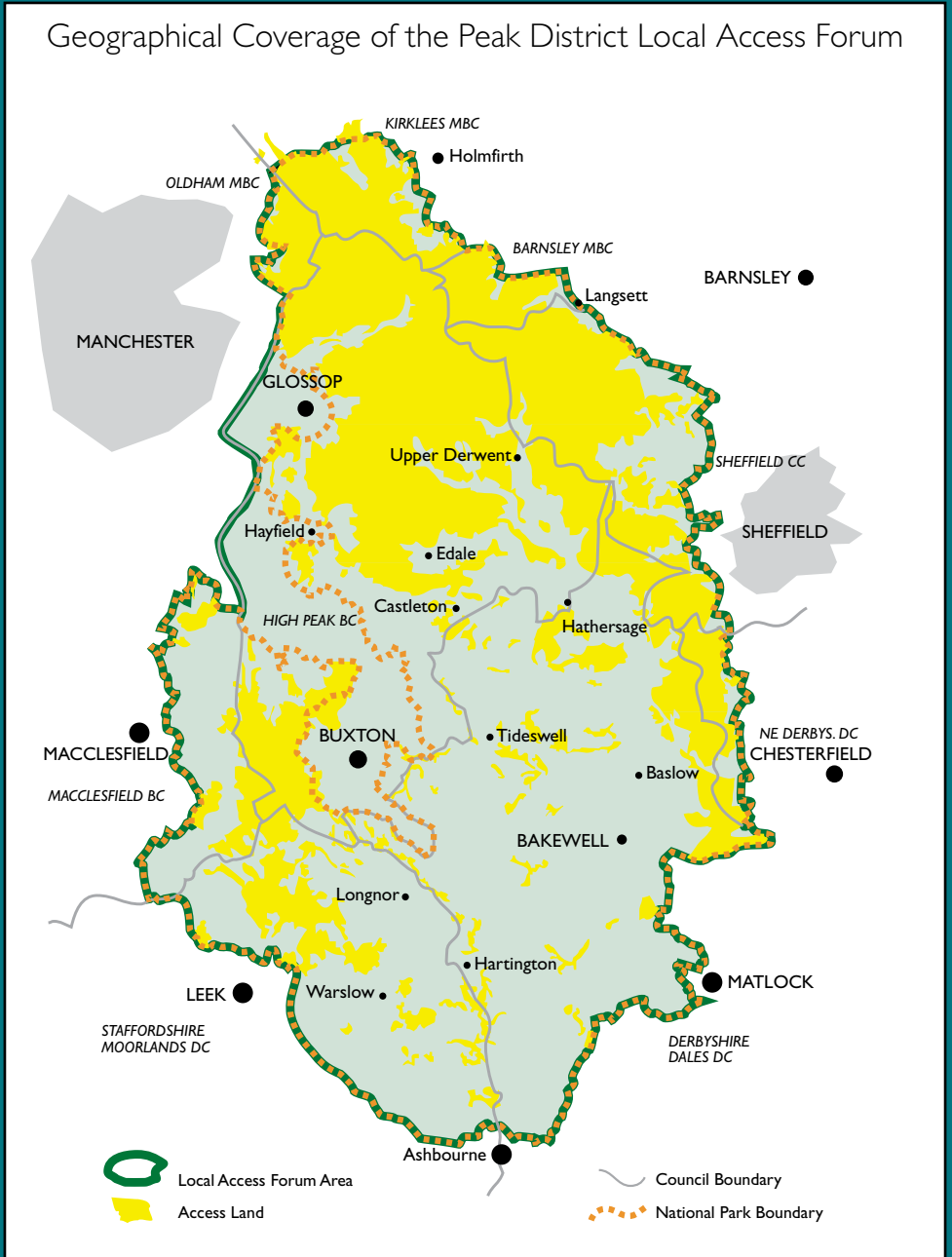
Local Access Forum Members

Left to Right – Terry Howard, Henry Folkard, Jon Clennell, Charlotte Gilbert, Bob Berzins, Brenda Harrop, Richard Entwistle, Edwina Edwards (Chair), John Thompson (Vice-Chair), John Hall, Andrew McCloy, Sue Weatherley.

MEMBER DETAILS AND ATTENDANCE 2011

Member	Background and Interests	Appointment expiry date	26/03/11	16/06/11	12/10/11	1/12/12
Edwina Edwards (Chair)	Community transport, Girl Guiding UK, walking, cycling, fell running	Sept 2012	✓	✓	✓	✓
John Thompson (Vice-chair)	Partnerships in recreation and education	June 2012	✓	✓	✗	✗
Bob Berzins	Fell running, conservation	June 2013	✗	✓	✓	✓
Jon Clennell	Outdoor pursuits, local community	Dec 2014	✓	✓	✓	✓
Richard Entwistle	Motor vehicle users	Dec 2013	✓	✓	✓	✓
Henry Folkard	Climber, conservation	Aug 2012	✓	✓	✓	✓
Charlotte Gilbert	Land manager, horse rider	Dec 2014	✓	✓	✓	✓
Clare Griffin	Trail-bike rider, fell runner	Oct 2014	-	-	✓	✓
John Hall	Farming	Nov 2013	✓	✓	✓	✓
Brenda Harrop	Farming	Resigned Dec	✓	✓	✗	-
Terry Howard	Walker, access campaigner	Aug 2012	✓	✓	✓	✓
Mike Innerdale	Recreation & Conservation, National Trust	Resigned March	✓	-	-	-
Mike Johnson	Walking, climbing, paragliding	June 2012	✗	✗	✗	✗
James Kellie	Landowner, holiday accommodation	Dec 2014	✓	✗	✓	✗
Adge Last	Outdoors education, cycling	Oct 2014	-	-	✓	✓
Andrew McCloy	Outdoors writer, walker, local community	Aug 2012	✓	✓	✓	✗
Andrew Murley	Conservation, social inclusion	Resigned June	✓	-	-	-
Geoff Nickolds	Recreation and conservation management	Resigned June	✓	✓	-	-
Richard Peart	Outdoors education	Aug 2012	✗	✓	✗	✗
Ben Rayner	National Park Authority appointee	n/a	✓	✓	✓	✓
Jon Stewart	Recreation and conservation, National Trust	Oct 2014	-	-	✓	✓
Ally Turner	Horse riding, walkers, young people	Oct 2014	-	-	✓	✓
Sue Weatherley	Ramblers, wildlife	June 2012	✓	✓	✓	✓
Jean Wharmby	Derbyshire County Council appointee	n/a	✗	✗	✗	✓

Geographical Coverage of the Peak District Local Access Forum



www.peakdistrict.gov.uk

Aldern House, Baslow Road,
Bakewell, Derbyshire DE45 1AE
T: 01629 816200

E: customer.service@peakdistrict.gov.uk

www.derbyshire.gov.uk

Derbyshire County Council, County Hall,
Matlock, Derbyshire DE4 3AG
T: 0845 605 8058

E: contact.centre@derbyshire.gov.uk