

Parklife

Issue 19 | Spring/Summer 2015

The Community Newsletter of the **Peak District National Park Authority**

Pennine Way
Celebrating
50 years
Page 8-9

www.peakdistrict.gov.uk

Parklife is printed on recycled paper



Stanage-North Lees

True grit marks
new way forward

Page 4-5



South West Peak

Rural life is
changing, we need
to look after it
Page 6-7

Contact us...

customer.service@peakdistrict.gov.uk

01629 816200 or by post:

Peak District National Park Authority,
Aldern House,
Baslow Road,
Bakewell,
Derbyshire, DE45 1AE



@peakdistrict



/peakdistrictnationalpark



+peakdistrictgovuk



Parklife is produced to inform national park residents about the work of the Peak District National Park Authority and its partners.

Parklife is designed by the Authority's design and photography team.

Contact us for design services at
design@peakdistrict.gov.uk
T: 01629 816305



Lesley Roberts (centre), chair of the Peak District National Park Authority at the environmental classroom at Hope Construction Materials

Hello, Goodbye and Welcome!

I am sure you would agree that there are few things in life that are certain but change is one of them. There are three changes I'd like particularly to share with you, namely -

Hello - to our first female chief executive, Sarah Fowler. This is a good change and one I am very excited about. I'll leave it to Sarah to tell you all about our future ambitions for this much-loved national park.

Goodbye - after 8 years to Geoff Nickolds, our Secretary of State member for biodiversity and deputy chair. This leaves me feeling very sad, as Geoff has made a very valued contribution to the Authority and will be sorely missed.

Welcome - to a new member, Penny Anderson. She replaces Geoff and brings great ecological skills to our table. I am sure we will learn a lot from Penny.

Since I last wrote, we and our partners have received an earmarked grant from the Heritage Lottery Fund (HLF) for £2.5 million. The grant

is for the South West Peak and will be used to focus on the precious landscape and its value to us, exploring the connection between people and landscape. This will include conserving valuable buildings and improving our education outreach programme, read more pages 6-7.

In this edition, read about our commitment to Stanage-North Lees, and how Rebekah Newman, our new property manager, will care for and protect it. You can get your walking boots out and celebrate 50 years of the Pennine Way with us in April, starting at Edale. Finally, if you have access to the internet, take a few minutes to enjoy our new quirky animated film aimed at teenagers, giving them some tips on how to enjoy our national park responsibly.

I wonder what changes will come next...

Lesley Roberts

Chair of the Peak District National Park Authority

lesley.roberts@peakdistrict.gov.uk

Sarah Fowler



Courage, compassion, connections...

Did you know?

The cost of the 10 national parks in England per year equates to 83p per person. That's about the same as a bar of chocolate, and less than a cup of coffee!

...is the mantra of our new chief executive Sarah Fowler. Courage to do the right things for the future; compassion for people so they can do their best; and connections to achieve and deliver through working together.

Sarah picked up the Peak District baton in January. She has come to us from the Environment Agency, where she led a team of 1,000 staff protecting and enhancing the environment and reducing flood risk for communities across the East and West Midlands. She has also worked at English Nature (Natural England's predecessor), the Royal Society for the Protection of Birds (RSPB), and Wiltshire Wildlife Trust. She has lived in Derbyshire for 4 years, is a keen fell-runner and mum-of-two.

Sarah said: "I feel so very privileged to be the chief executive for this wonderful place that inspires millions of people. Two months in, and a steep learning curve, I am feeling inspired and impressed by the people I have connected with so far who live and work in, and visit, the Peak District National Park.

"It is clear I am in a national park with an impressive track

record, great ambitions and a pioneering spirit. I've already seen in our work like Moors for the Future that the staff I'm working with are passionate about protecting and caring for this exceptional landscape that we all enjoy so much.

"Our services are here to look after the special environment of the Peak District; to create inspiring opportunities for all; we are also here to help thriving and vibrant communities and businesses.

"Our connections and ability to reach out to you - communities, businesses, farmers, landowners, and other partners - is crucial in helping us deliver our ambitions for the Peak District National Park. Please do reach back so we can collectively listen and learn from each other. With your help we are keeping the Peak District an inspirational and uplifting place for this and future generations.

"One of the many new facts I've learnt is that central government funding for the 10 national parks in England equates to a contribution of 83p per person living in England, per year. This precious small amount from taxpayers goes a long way but with a reducing grant from government (36% down since 2011) each year we find ourselves needing to add to it through alternative funding. The rest of our funding we have to find from other sources such as the Heritage Lottery Fund and other funders, income from car park charges, planning fees, and generous donations through giving.

"The financial climate we operate in is a challenging one, but this will not dampen our ambitions. We will work together in an enterprising and business-like way to secure a sound future for the Peak District National Park."

Sarah Fowler

Chief executive of the Peak District National Park Authority



@peakchief

www.peakchief.wordpress.com

sarah.fowler@peakdistrict.gov.uk

True grit and determination marks the way forward for Stanage-North Lees

Meet Rebekah Newman, the new property manager for the 545 hectares North Lees estate, near Hathersage.

“My job is to protect and care for the spectacular landscape that is Stanage-North Lees. As far as jobs go, it is pretty challenging.

“Recently, we have changed how we manage our properties in the Peak District National Park. We now group

all the facilities at each property together under one manager. This means for Stanage-North Lees I have overall responsibility for managing the property, including car parks, toilets, campsite and farm, covering



both landscape and wildlife protection. It is a mammoth task that I am relishing.”

One of Rebekah's first successes was securing new funds for the much-loved campsite.

“We have recently strengthened our commitment to Stanage-North Lees by agreeing a sizeable investment of up to £60,000 in its rustic campsite. It is recognition of the importance of the campsite in helping people enjoy the landscape.

“Not everyone realises what Stanage-North Lees covers. It includes Stanage Edge, the world-famous climbing destination, as well as the farmland surrounding North Lees Hall and farm. So it is a vast area which takes a lot of resource to manage, which costs money.

“Stanage is well known for its rich wildlife and archaeological features as well

as being a fantastic place to explore and discover. You can climb, walk, cycle and even hang glide, or you can opt to relax and enjoy the tranquillity of a truly inspiring landscape.

“I feel privileged to work here and most days I see something spectacular. We have the ring ouzel, a nationally declining species but thriving here – mainly because of the voluntary restrictions on access during the breeding season.

“This positive relationship, the connection between people and place, is a result of a ‘partner approach’ to the development and implementation of the management plan for the property. I can’t manage the property on my own and need lots of help through groups like Stanage Forum, the British Mountaineering Council (BMC) and others.”

The management plan is now being reviewed with aspirations for enhancing both the landscape and the visitor experience, through:

- Upgrading the campsite facilities with better showers and toilets
- Seeking to install 4 modern eco-friendly camping pods to allow winter camping in comfort
- Better interpretation information on-site
- Better conservation of the landscape and enhanced access
- More things to see and do, enabling a wider range of people to visit and learn about the area
- Nurturing a personal connection to the landscape through volunteering and financial support.

It pays to support Stanage

For a contribution of £15 you will receive **FREE PARKING*** as well as a discount for the campsite. This contribution will be invested directly into Stanage-North Lees. Call 01629 816200 for details.

*Only applies at Stanage-North Lees Car Park.

More information at:

www.peakdistrict.gov.uk/stanage-northlees

Or phone Rebekah Newman on: 01629 816397

Email: rebekah.newman@peakdistrict.gov.uk

Historic North Lees Hall, close to the campsite, was built in the late 16th century by architect Robert Smythson, who also designed Hardwick Hall. You can rent it from the Vivat Trust for short breaks.

Landscape at a Crossroads is a £2.5m scheme, funded by the Heritage Lottery Fund (HLF), run by the South West Peak Landscape Partnership, to enhance and protect habitats and species and support local communities.

Warslow Moors

South West Peak Landscape at a crossroads

Misty. Moody. Magical. Mysterious... The South West Peak is a place apart, a land of contrasts, of craggy rocks and mermaid's pools, green knights and hill farms. But it's not just the rocks that shape its nature. It's the weather, the wildlife, and it's the people.

For thousands who flock to the Roaches and surrounding landscape, it is theirs to escape to for walking, climbing and birdwatching. However, the moorland and meadows are also homestead and workplace to farming families and residents of this beautiful hinterland to the area's market towns.

But what of the rural idyll? Sheila Hine has farmed in the thick of it, near Meerbrook, for over 30 years. "It's the everyday country folk that bring this landscape to life; the problem is we're losing people and skills in farming. Species-rich grasslands and especially haymeadows need to be farmed in a certain way, field drains need unblocking or the coarse rushes return and knock out the more delicate species, and then it's no good for animal fodder either.

"If we want to keep stone walls and field barns, lay hedges and unblock drains we've got to keep people working on the land to maintain it all. We need young people to pass our skills on to the next generation."

"We need to find ways of making life a bit easier for farmers. We farm because we love working outdoors and with livestock not because we like sitting in an office doing paperwork which is becoming an increasing burden! We want our food products to be valued and respected instead of being used as low cost commodities to be battered down in supermarket price wars."

As part of the Landscape at a Crossroads scheme, Sheila, author of the Field Barns book, is to interview local farmers to capture their memories for a new book. Along with artist, photographer and writer Christine Gregory and Julia Cook of the Farming Life Centre, Sheila, will show how rural life has changed over the decades since World War II, and comment on where farming is heading. Audio visual material will also be produced.

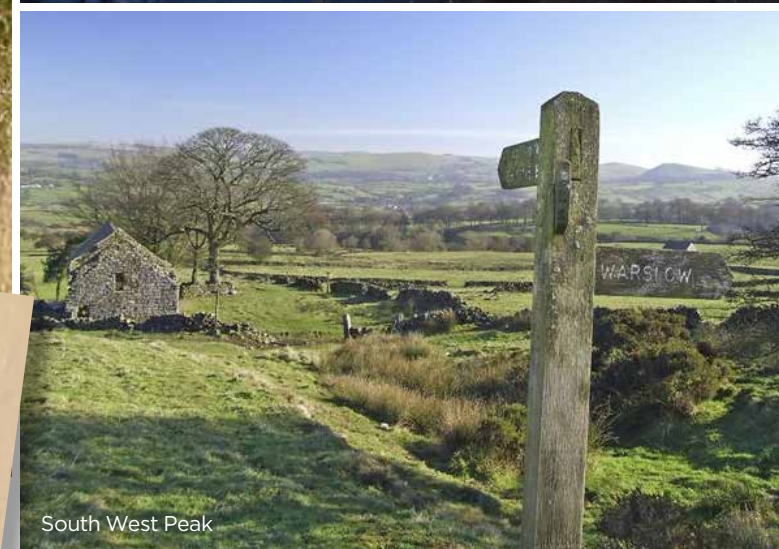
"This landscape is unique, it needs all of us, the public and farmers, to look after it."

A weather-hardened traveller
Bearing the weight of generations,
Rests awhile at a crossroads.
His grandfather's wisdom of the seasons,
The coal-black hands of winter
And hayseed fingernails of summer,
Tell the story of his childhood beginning.
Through land of myths and legends
Along hollow-way and turnpike road;
Past collapsed coal-mine shafts
And rubble-filled old lime kilns;
Forgotten relics of landscape past.
His proud field barn, once shelter
To hardy cattle after the hay cut,
Now tumbledown and empty
Even of summer's swallows.
Which path to take through watershed moors
And fading echoes of the curlew's cry?
Visiting travellers from silk towns around,
Drink from this land, yet
Have been oblivious to his struggle.
Now they will join and lend a hand
On the path where wisdom and innovation
Meet to pave a smoother road.

By Karen Shelley-Jones



Sheila Hine



South West Peak



Lapwing chick



Curlew



LOTTERY FUNDED

More information at:
www.peakdistrict.gov.uk/southwestpeak
Or phone Karen Shelley-Jones on:
01629 816269

The South West Peak Landscape Partnership is led by the Peak District National Park Authority. The partners are: Staffordshire and Cheshire Wildlife Trusts, Natural England, Environment Agency, English Heritage, RSPB, The Farming Life Centre, Support Staffordshire, Staffordshire County Council, Severn Trent Water and United Utilities.

Leading the Way

The Pennine Way celebrates its 50th anniversary in April and plans are well under way to mark the occasion in the Peak District village of Edale.

Nestling in the shadow of Kinder Scout, scene of the 1932 Mass Trespass, there was never really any doubt that Edale would be inextricably linked with the history of access to England's open countryside.

So it was entirely fitting that when the Pennine Way, the first National Trail, opened on 24 April 1965, the start - or end, depending on which way you are heading - was in the Peak District village.

To mark the 50th anniversary of that day, a new starting point has been created and children from the local school have contributed to a time capsule.

The national park's Moorland Visitor Centre in the village will be the focal point for a weekend

of community celebrations and will be open on the evening of Friday 24 April for talks and displays, covering the history of the trail, Edale's historic connections and the Mass Trespass. There will also be music and demonstrations of local crafts, with a guided ranger walk on the Sunday.

The Pennine Way originally began at the Nag's Head pub and climbed Grindsbrook but erosion issues mean the route now promoted ascends Jacob's Ladder.

Martyn Sharp, The Peak District National Park Authority's Pennine Way Ranger, said: "The anniversary seemed the perfect time to do something about a new formal starting point.

"The dry stone wall has been rebuilt by myself and another ranger, Terry Page, and we have had a one-off oak gate made by Andy Bentham, from our countryside maintenance team, with the central panel showing the route. Mark Priestley from the team has also been a big help in getting everything in place.

"The children and staff from Edale Primary School really got behind the project and they have had great fun putting the time capsule together."

One man with a special interest in the celebrations is Mark Reeves, who runs the Authority's Fieldhead campsite at Edale with wife Samantha.

Mark, who was already a

keen hill walker when he moved to the village at the end of 1999, completed the Pennine Way in 2006, along with dog, Ziggy, and two other Edale residents, father and son Geoff and Shane Townsend.

They did the walk the other way round, starting at Kirk Yetholm and camping along the way, arriving home about three weeks later.

Mark said: "We called it the Long Walk Home. It was a bit different because we had

about 100 people on the site every year intending to do the walk from Edale.

"We walked for 18 days, stopping at just about every place of interest along the way, and we got a really warm welcome when we walked back into Edale.

"For some people the Pennine Way is a challenge, for others it's an adventure. For the three of us, it was simply something we wanted to do."

The Peak District National Park Authority set up an Access Fund last September to mark the 10th anniversary of the introduction of open access.

The fund is ring-fenced for access improvements, including new access points, restoring, promoting and building paths and improving signage.

To make a donation, call 01629 816379 or send a cheque made payable to 'Peak District National Park Authority' in an envelope marked Access Fund to Aldern House, Baslow Road, Bakewell, Derbyshire, DE45 1AE. We would welcome your support.

Pictured left: Tom Stephenson, who was the inspiration behind the Pennine Way, on a visit to Edale in 1976



Andy Bentham, Terry Page, Martyn Sharp and Mark Priestley at the new starting point

Walk this Way

- Originally inspired by an article, Wanted: A Long Green Trail, by walker and writer Tom Stephenson, published in the Daily Herald in 1935.
- Starts at Edale, ends at Kirk Yetholm in the Scottish Borders
- The Pennine Way stretches for 268 miles (429km) and most full-length walkers allow between 16-19 days
- The record is held by Mike Hartley. In 1989 he completed the Pennine Way in two days, 17 hours, 20 minutes and 15 seconds. He did it without sleep and only stopped twice, each time for 18 minutes, and enjoyed fish and chips on the second stop!
- An estimated 1,500-1,700 people complete the full distance each year, with more than 200,000 using the trail in total
- Most people walk south to north, as the wind is usually behind them and the official guide is written that way, so Edale is widely regarded as the starting point
- The Pennine Way, a series of 4 half hour programmes, will be shown on BBC One on Fridays from 10 April.

MORE INFORMATION

www.nationaltrail.co.uk/pennine-way

www.penninewayassociation.co.uk

www.peakdistrict.gov.uk/visiting/visitor-centres/edale



Putting down a marker

Part of the landscape

- Millstones have been associated with the Peak District since the 13th century and are part of its cultural heritage
- Records show they were quarried in Hathersage and Baslow in the 15th and 16th centuries
- The more familiar wheel-shaped stones date from the 18th and 19th centuries and were used to grind grain
- Grindstones were used to create wood pulp to make paper
- As well as the boundary markers, millstones also feature in the Peak District National Park logo

Pride at being part of the Peak District National Park led villagers to make their mark in a unique way.

The people of Dunford Bridge knew they were part of the Peak District National Park... they just wanted a way to let everyone else know about it. And they have created a little bit of history with the first millstone boundary marker to be installed in a quarter of a century.

Following a large increase in visitor numbers during the Tour de France, the village wanted a permanent reminder which would help promote local attractions including

Langsett Barn and the Trans Pennine Trail.

Sue Perry Sykes, vice-chair of Dunford Parish Council, said: "This is something really positive for the area. To be honest, most people from outside the village don't realise that Dunford Bridge is in the Peak District National Park. But when the Tour de France came through, we had lots of visitors and people using the Trans Pennine Trail and they loved the area."

The Peak District National Park Authority covered most of the £5,000 cost through its Sustainable Development Fund. Barnsley Metropolitan Borough Council contributed £1,000 and provided the land, volunteers helped clear the site and National Grid loaned equipment to lift the stone into position.

Peak District National Park area ranger Fiona Draisey said: "It has been great to see the local people get behind the project and it was a special day for the village. This was a real community effort."



The paid for pre-application advice will help you:

- get your application right first time
- find out exactly what information is required to accompany an application
- identify any views and issues
- save time and money by not submitting an application if the proposal is likely to be unacceptable

Introducing planning advice charges for householders



John Scott, director of planning

The financial squeeze on the national park budget (reduced by 36 per cent since 2011) means we continue to look for ways of bringing in money towards the cost of providing our services. This is why, from April 1, we are charging for pre-application planning advice to householders.

Set at £100, including VAT, the charge for advice is a relatively small part of the cost of any development. It means that individuals cover some of the planning cost involved rather than it being paid for by all tax payers and allows us to deliver a higher-quality planning service.

John Scott, director of planning, explains: "If you plan

to build an extension to your home or make alterations that need planning permission, you will be charged for the advice you receive before submitting a planning application.

"You will be paying for specialist advice that is tailored to your particular plans. The advice you receive will help you achieve an application that is more likely to be approved."

"Whilst the planning advice fee will still not cover our costs, it will help us operate a high quality planning service in a time of severe budget cuts."

Advice on listed building works remains free of charge.

Around one third of planning applications in the national park are from householders. Charges for pre-application planning advice for businesses and developers, introduced in April 2014, achieved over £20,000 income in one year and allowed us to deliver a higher quality planning service.

Further information is available on the national park website at: www.peakdistrict.gov.uk/planning/advice

Bringing history to life

Grants from the Peak District National Park Authority's Sustainable Development Fund have uncovered stories hidden in the landscape and put a local history project on the road to success.

Unearthing Elton's rich heritage

Two new information panels are helping people to enjoy the landscape and local history of the Peak District National Park.

Both are close to the village of Elton with the first, at Moor Lane, revealing more than 30 popular Peak District locations visible on a clear day, including Haddon Hall, Mam Tor and Win Hill, 15 miles away. It also tells the story of the important local historic lead mining

site known as Rainslow Scrins, a Scheduled Ancient Monument.

The second panel is below the village, near Burycliffe quarry. It tells of pulping stones from the quarry being shipped to Scandinavia for the paper-making industry; how the local spring used to provide most of Elton's drinking water; and pictures motorcycle trials champion Mick Andrews, who lived in the village and honed his skills at the quarry.

The panels are the work of Elton Local History Group and spokesperson Lynn Burnet said: "The area we live in has a very rich history that we want to record and share with anyone who is interested. These information boards help local people and visitors to interpret



the landscape."

The panels were funded by the Peak District National Park's Sustainable Development Fund. Stella McGuire, the Authority's member champion for cultural heritage, said: "They show that Elton village and the surrounding landscape have a fascinating past and will attract visitors to support the rural economy."

To plan a visit or to find out more about the local history of Elton or Gratton, go to www.eltonderbyshire.com

Van-tastic start for pioneering project

A travelling museum that delivers history to the doorstep has moved up a gear as it starts its second year on the road.

The History Van is run by Jenny Bland, who is passionate about bringing the past to life for schoolchildren and community groups.

Launched in October 2013 with support from the Peak District National Park's Sustainable Development Fund, the History Van took

more bookings in the first four months of the current school year than in the whole of its first year.

Much of the increased demand is from primary schools, often using the Peak District's rich local history and pre-history to give a different take on the new school curriculum.

The History Van carries a collection of artefacts, including billy cans and old parachutes,

bobbins and spinning spindles, carpet beaters and dolly tubs. There is even a set of village stocks.

Jenny said: "Having the van means I can take the collection to wherever people want to delve into history, to recreate and experience what life was like in different times.

"I hope it gives people a better understanding of life in the past and inspires everyone to find out about their heritage."

'Excellent, great fun and very memorable... a brilliant session'

Bradwell Infant, Hope Valley

'A fantastic day, we'll be asking you back for more!'

All Saints Junior, Matlock

All aboard. For more details or to book a session, email: thehistoryvan@gmail.com or visit: www.thehistoryvan.com



Image supplied by Elton Local History Group





Do This

it's the Peak District!

A 'Do This' resource guide for leaders and teachers is available to visiting school groups, from the webpage or by emailing: learning.discovery@peakdistrict.gov.uk

A child riding a dinosaur, a newt in a bottle, a pheasant using a laptop? Meet the stars of a fun, new cartoon that's helping youngsters stay safe and enjoy the national park.

Our fun, quirky film raises awareness of how to behave in the countryside whilst on school visits or with family and friends. Groups of young people helped inform the script, storyboard, and fun features. And, the colourful animation and catchy song was made by young, Derby-based film company Mair Perkins.

The animation combines quirky humour and cute cartoon figures to illustrate responsible behaviour and environmentally-friendly messages about noise, litter, walls, livestock, wildlife and more.

'Do This' is nearly two minutes long and can be seen online at www.peakdistrict.gov.uk/do-this A subtitled version is also available from this webpage.



It has been screened at film festivals, on hospital TV in Manchester, at an educators' conference and youth forum, as well as on our YouTube channel and Facebook page.



Illustration by Mair Perkins
www.mairperkins.co.uk



Annie: proud to make a difference

Our army of volunteers play a vital role in keeping the Peak District National Park looking at it best. Here we meet one of the youngest...

Annie Rudd loves the great outdoors. And she takes a special pleasure in helping to keep the national park beautiful for other people to enjoy as much as she does.

The 17-year-old Marple Sixth Form College student from Glossop became one of the youngest recruits at Longdendale when she started volunteering last summer, following in the footsteps of her dad, Mike, who used to volunteer as a ranger at Langsett.

"I love volunteering and get out as often as I can," Annie said. "It gets me out into the fresh air and working in amazing surroundings.

"I've done different things that help the environment - like taking Himalayan Balsam out

of ditches and verges. It's an invasive species that clogs things up and it feels good to get rid of it so that native plants have a better chance.

"I've also helped remove the tree-guards from young trees next to the Longdendale Trail - you can see where you've been and made the countryside look so much better - and that makes it worth doing.

"My friends think it's great that I am doing something I am passionate about. It's nice to talk to them about doing things which actually make a difference to the places that we all like to go to together.

"Hopefully I will be going away to university but I want to carry on volunteering when I come back."



VOLUNTEERING



Get involved

There are many ways to volunteer with the Peak District National Park. Opportunities include:

- **Volunteer rangers**
- **Learning and discovery volunteers**
- **Conservation volunteers**
- **Moors for the Future volunteers**
- **Educational and outdoor learning volunteers**
- **Community science volunteers**
- **Duke of Edinburgh Award residential programmes**
- **Corporate days for companies wanting team-building projects**

Full details at www.peakdistrict.gov.uk/lookingafter/volunteering

Events & Activities



Here's a selection of what's on offer this year. There's loads more online too! Check out:

www.peakdistrict.gov.uk/events

Longdendale Muck-In Days

Tuesday 31 March & Tuesday 14 April
10am to 1pm

Join us for a morning of conservation activities, and why not bring a picnic lunch and stay for the afternoon? We will set up self-led family events including orienteering, following a trail or a reservoir run. Free, drop in any time, for details call 01629 816211.

Derwent Pulse with Charles Monkton

Tues 14 April to Tues 12 May
9.30am to 5pm

In 2014 artist Charles Monkton created a light installation of multi-coloured, fluorescent spheres which were floated down the River Derwent from the Howden Moors, to the south of Derby. This is a visual record of this great work of art. Peak Gallery at Bakewell Visitor Centre - **free entry**.



Signs of Spring around Lathkill Dale

Monday 4 May
11am to 4pm

Join us for a nesting birds trail, spotting young leaves, woodland flowers and the sounds of spring, plus craft activities. Lathkill Dale (Over Haddon end). **Free event**. Drop in any time, no need to book.

'Lathkilltrail' Day

Monday 25 May
11am to 4pm

Explore Lathkill Dale with a variety of short family-friendly trails and treasure hunts. Lathkill Dale (Over Haddon end). **Free event**. Drop in any time, no need to book. Parking available in the public car park at Over Haddon (charge).

2 for 1 Cycle Hire

cheapest goes free

- Valid for full day hire on Tuesday, Wednesday and Thursday only, subject to availability
- Expires: 30 September 2015
- Not valid on higher spec bikes or electric bikes
- Cannot be used in conjunction with any other offer
- This voucher must be handed in to receive offer
- Photocopies not accepted

An Easter Mermaid

Sunday 5 April
10.30am to 4pm

6 mile walk to Mermaid's Pool, where legend promises a magical appearance every Easter! Moderate terrain with some steep climbs from the village of Hayfield. Donations welcome. Booking essential, call 01629 816211.



Boggarty Boggarty Boo!

Thursday 28 May
10am to 12.30pm

Discover the magical world of boggarts - follow a boggart trail, find boggart treasure and make your own boggart from natural materials. Stanage-North Lees Campsite. £3 per child, booking essential, call 01629 816211.

L'Eroica Britannia

Friday 19 June to Sunday 21st June

3-day family friendly festival The UK's most affordable weekend family festival break - celebrating the best of British. A festival dedicated to style and flamboyancy with music and food. Visit eroicabritannia.co.uk for tickets, £10 per person for 3 days, under 12's go **FREE**.



Food from the Wild

Wednesday 8 April
1pm to 4pm

Hunt for some common plants and edibles close to Longdendale Environment Centre and, with an expert guide, even try a few! £5 per child. Booking essential, call 01629 816211.

Easter Family Treasure Hunts

Thursday 9 April & Sunday 12 April
11am to 4pm

Explore one or both of our Easter trails, starting from Castleton Visitor Centre. Or simply join us for Easter activities at the centre. Donations welcome. Drop in any time, no need to book.

Spring Flowers around Millers Dale

Sunday 26 April
11am to 3pm

4 mile wander around Millers Dale, looking at spring flowers and examining their past and present uses. £3 per person. Booking essential, call 01629 816270.

National Parks Week with Peak Gallery

Tuesday 30 June to Tuesday 4 August
9.30am to 5pm

The artists at Peak Gallery will be inviting you to explore outside the Peak District with a visual trip to some of the other wonderful UK National Parks. Peak Gallery at Bakewell Visitor Centre - **free entry**.

Words and Pictures with Helen Mort

Tuesday 8 September to Tuesday 20 October
9.30am to 5pm

This collaborative exhibition will feature words by Derbyshire Poet Laureate Helen Mort and pictures by the gallery photographers. Peak Gallery at Bakewell Visitor Centre - **free entry**.

Samuel Rayner's Haddon Hall

Tuesday 3 November to Tuesday 1 December
10.30am to 4.30pm

In 1835 Bakewell artist Samuel Rayner published 'The History and Antiquities of Haddon Hall' - a collection of lithographs of the Hall as it looked at the time. Peak Gallery artists recreate Rayner's works using their cameras. Peak Gallery at Bakewell Visitor Centre - **free entry**.

Visit: www.peakdistrict.gov.uk/visiting/visitor-centres/bakewell or T: 01629 816558

News in Brief



Summer of Cycling

As part of ambitions to be one of the UK's premier places to cycle, the Peak District and Derbyshire is to stage a Summer of Cycling promotion encouraging people to get in the saddle. The programme will combine events, entertainment and international festivals to boost numbers of those getting active and having fun on two wheels.

The 2015 project will run throughout June, July and August and feature a number of special promotions to motivate participation.

It will be co-ordinated by a partnership of High Peak Borough Council, Staffordshire Moorlands District Council, Derbyshire Dales District Council, the Peak District National Park, Visit Peak District and Derbyshire, Derbyshire County Council and Derbyshire Sport.

For more information see:
www.summerofcycling.co.uk



Path for the future

The popular Whinstone Lee Tor permissive path on Moscar Moor, which stretches for 2,500 metres along Derwent Edge, is being resurfaced by Moors for the Future Partnership.

The work will provide a path for walkers, repair important peat and vegetation and lead to less wildlife disturbance.

It is part of a Private Lands Project in which moorland owners and farmers are working with MFFP and Natural England to restore Sites of Special Scientific Interest.



Practical Peak

Practical Peak is a new 'trusted trader' type scheme to help people find reliable environmental or land-based businesses in the Peak District. It provides a searchable online database of skilled professionals such as dry stone wallers, agricultural or forestry contractors, ecological consultants, farm shops and much more.

To cover costs, businesses pay an annual membership fee of £36 including VAT. Customers have free access to the database to search for businesses and provide star ratings for quality of service.

If you have a business that qualifies visit:
www.peakdistrict.gov.uk/practicalpeak



Appliance of 'citizen science'

Moors for the Future Partnership's Heritage Lottery Funded Community Science Project is set to provide Peak District National Park residents with opportunities to learn and participate in 'citizen science'.

The project will help communities connect with the natural environment and moorland landscape.

By empowering people to contribute to the protection of their environment, it will teach new skills, share knowledge and guide those who manage the world we live in.

www.moorsforthefuture.org.uk

For all the latest news visit the national park website at:
www.peakdistrict.gov.uk/learning-about/news

Cut out and keep this page handy just in case you need to contact us

1 Robert Helliwell <i>Secretary of state member</i> 01433 670250	1 Clr Chris Furness <i>Council member</i> 01433 621811	1 Clr Harold Laws <i>Council member</i> 0114 247 5376	2 Clr Chris Carr <i>Parish member</i> 01335 390342	PARK WIDE Suzanne Leckie <i>Secretary of state member</i> 01298 872909 This map shows which members cover the area where you live. Use the colour code to help.
2 Clr Andrew McCloy <i>Parish member</i> 01629 636125	2 Clr TBC <i>Secretary of state member</i> TBC	2 Clr David Chapman <i>Council member</i> 01298 85067	3 Clr Patrick Brady <i>Parish member</i> 01298 85798	
3 Mrs Emma Sayer <i>Secretary of state member</i> 01283 480694	3 Clr David Chapman <i>Council member</i> 01298 85067	4 Clr Kath Potter <i>Parish member</i> 01629 734320	4 Zahid Hamid <i>Secretary of state member</i> 0114 2366332	
4 Clr Steve Marshall-Clarke <i>Council member</i> 07969 144909	4 Clr Judith Twigg <i>Council member</i> 01629 813292			
5 Clr Peter Harrison <i>Parish member</i> 01298 812081	5 Ms Stella McGuire <i>Secretary of state member</i> 01433 650908	5 Clr Doug Birkinshaw <i>Council member</i> 01226 770770	5 Clr Tony Favell <i>Council member</i> 01433 670281	5 Stuart Wattam <i>Council member</i> 0112 471007
6 Robert Helliwell <i>Secretary of state member</i> 01433 670250	6 Clr Colin McLaren <i>Council member</i> 0161 6274197	6 Clr Godfrey Claff <i>Council member</i> 01457 864331	6 Clr Damien Greenhalgh <i>Council member</i> 01457 853633	6 Clr Nicola Turner <i>Council member</i> 07528 988823
7 Clr Lesley Roberts <i>Parish member</i> 01538 388900	7 Paul Ancell <i>Secretary of state member</i> 01625 613995	7 Frances Beatty <i>Secretary of state member</i> 01889 508784	7 Clr Norma Hawkins <i>Council member</i> 01538 306683	7 Clr Gill Heath <i>Council member</i> 01538 381601
				7 Clr Hilda Gaddum <i>Council member</i> 01260 252456

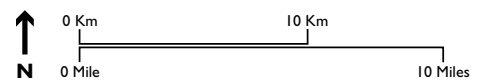
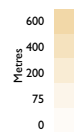
The Peak District National Park

© Crown Copyright and database rights 2015. 100005734.

Quality mounted and framed photographs are available from some of our Visitor Centres.



- | | | |
|------------------------|--------------------------|--------------------|
| National Park Boundary | Trail | Cycle Hire |
| Pennine Bridleway | Rivers/Canals | City/Town |
| Railway and Station | Pennine Way | Settlement |
| Railway Tunnel | Information Centre/Point | Reservoir |
| A Road | Country Parks | Woodland |
| B Road | YHA Hostels | High altitude land |
| | North Lees Campsite | |



Peak District National Park Authority, Aldern House, Baslow Road, Bakewell, Derbyshire DE45 1AE
Tel: **01629 816200** Email: customer.service@peakdistrict.gov.uk Web: www.peakdistrict.gov.uk

Peak District National Park Visitor Enquiries:

01629 816558 or email bakewell@peakdistrict.gov.uk

Bakewell Visitor Centre	Tel: 01629 813227
Castleton Visitor Centre	Tel: 01629 816572
Upper Derwent Valley	Tel: 01433 650953
Moorlands Centre, Edale	Tel: 01433 670207

Cycle Hire Centres:

Parsley Hay near Buxton, Derbyshire S17 ODG Tel: 01298 84493	Derwent Fairholmes, Derwent S33 OAQ Tel: 01433 651261	Ashbourne Mapleton Lane, Ashbourne DE6 2AA Tel: 01335 343156
---	--	---