

Peak District Local Access Forum

Date: 3rd December 2009

Item: 9

Title: Summary of Review of Directions to Restrict Access

Author: Sue Smith

Purpose of the Report

The purpose of this report is to provide a summary of the progress that has been made in reviewing the long-term directions to restrict access under the CRoW Act.

Background

A report was presented to the March 2009 meeting of the Local Access Forum to advise on the process for reviewing long-term directions for the exclusion of public to open access land within the Peak District National Park.

A Local Access Forum Sub-Group was established to comment on the consultations for the existing directions and proposed variations.

An update report is provided to each meeting of the LAF.

Progress

The Local Access Forum sub-group has met on 3 occasions: April, July and August 2009.

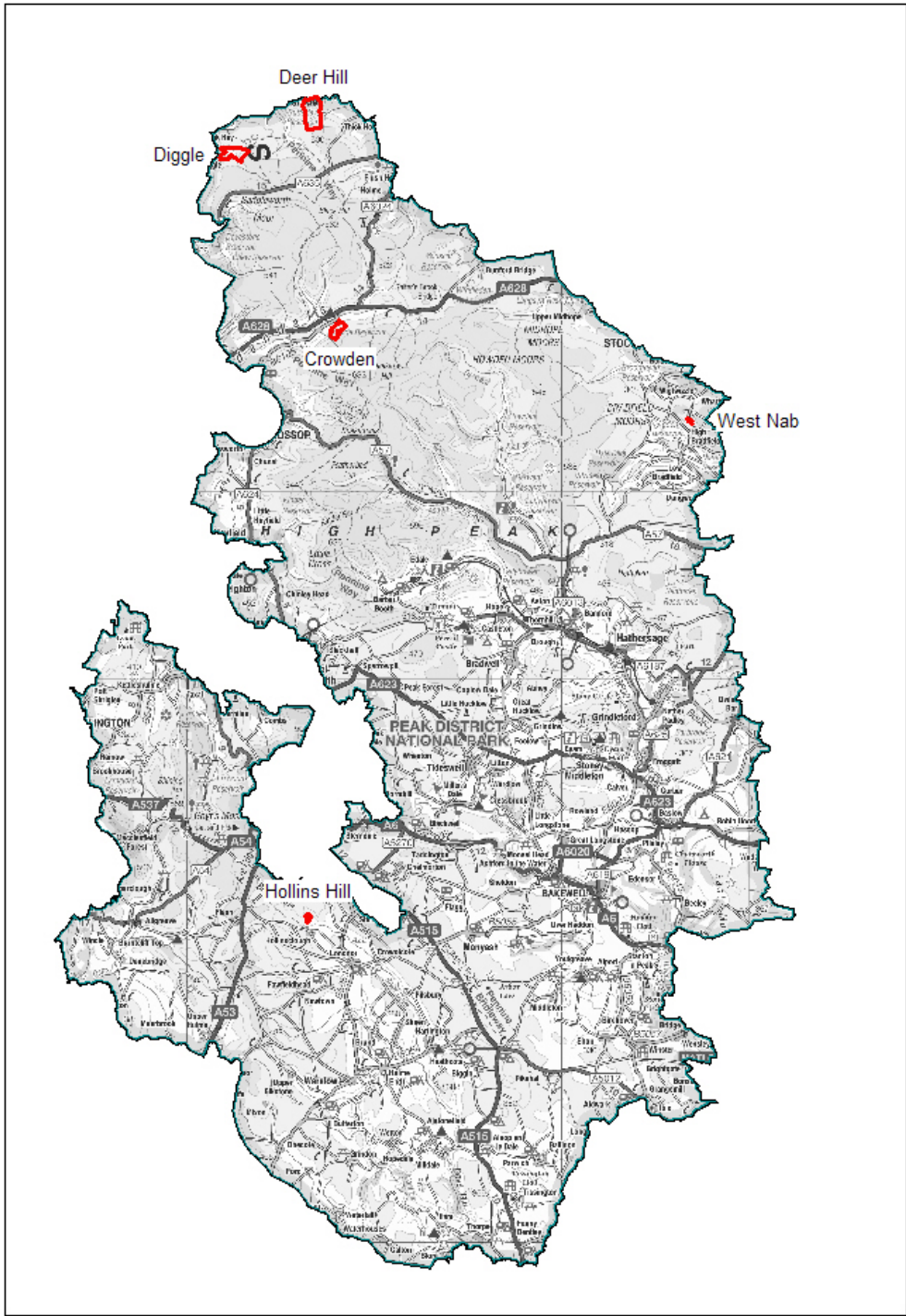
Discussions on the restrictions at Deer Hill, Diggle, and West Nab are ongoing in line with scheduled reassessment dates of 31 December 2009. There are two remaining sites to be reviewed at Hollins Hill and Crowden.

A map showing the location of the sites subject to review is appended (Appendix 1).

Recommendation

- 1. That the report be noted.**

Appendix 1: Sites with Long-term Directions Subject to Review



This map is reproduced from Ordnance Survey material with the permission of Controller of HMSO. Crown Copyright. All rights reserved. Peak District National Park Authority. Licence No. LA 100005734. 2009