

Out and about....

Celebrating the Mass Trespass

Ramblers will tread in the footsteps of the original Mass Trespassers on Kinder Scout on April 21-22 to commemorate the 75th anniversary of the historic protest.

The celebrations will include the launch of a new Trespass Trail – covering a 14-mile route from New Mills and taking in many key Mass Trespass locations. The Trail will be available as a booklet or a *podcast for mobile phones or MP3 players.

National Park and National Trust rangers will lead walks on the full trail, or shorter sections, on both days – and special events will take place at New Mills Town Hall on the Saturday night. Call 01663 747786 to book walks.

The original Mass Trespass on 24 April 1932 led the way for public access to moorlands and the creation of National Parks. Demonstrators from Manchester and Sheffield clashed with gamekeepers on Kinder Scout, and six were jailed. A national outcry eventually led to wider access, with 37% of the National Park open for rambling today.

Sir Martin Doughty, chair of Natural England, is leading the commemorations, supported by the National Park Authority, National Trust, High Peak Borough Council, New Mills Town Council, Ramblers' Association, British Mountaineering Council and High Peak Arts.

*For other podcast trails, go to www.moorsforthefuture.org.uk and click on Audio Trails



On a roll – with disabled ramblers

Disabilities are no bar to exploring the Peak District – as members of Disabled Ramblers know.

They come every year, enjoying miles of trails accessible to mobility scooters and wheelchairs – crossing bridges, even fording streams along with the able-bodied.

Disabled Ramblers chairman Mike Bruton said: "We get tremendous pleasure out of the Peak District, and we plan to continue our visits – it's very central, and the scenery is wonderful.

"We've covered most parts that are accessible, including the Tissington and High Peak trails, Derwent Valley, Goyt Valley and Longdendale, as well as some lesser-known areas. We do recommend it."

Recent improvements include a ramp at Derwent Valley's Slippery Stones bridge, which with surfacing work this year, will enable wheelchair-users to circuit the reservoirs. Newly accessible paths also include Surprise View near Hathersage, and Upper Burbage Bridge near Ringinglow – both scenic viewpoints and picnic-spots.



Disabled rambler in the Derwent Valley

Information

For a free 'Access for All' guide, call 01629 816200, or go to: www.peakdistrict.gov.uk (click on Visiting, then Accessibility, then Access for All).

Update due in summer 2007 to include moorland routes. Ranger-guided rambles for people with disabilities: 01629 816290

Mobility-cycles/scooters at cycle-hire centres: Derwent 01433 651261, Parsley Hay 01298 84493, and Ashbourne 01335 343156.

Disabled Ramblers: www.disabledramblers.co.uk



Badly eroded moorland

Mending the moors

Moors – wild, barren places, only fit for a few sheep and grouse, aren't they?

Well no, actually, the Peak District moorlands are:

- an internationally-recognised rare habitat for wildlife and breeding birds
- a weapon against climate change through locking up CO² in peat
- a contributor to clean water supplies
- a key factor in reducing flood-risk for towns lower down the valleys

That is why the £4.7m Moors for the Future project, which started in 2003, has been striving to restore this wild, dramatic landscape after centuries of pollution, erosion, fire-damage and over-grazing.

A vast area of previously black, eroding peat is now green with the shoots of recovery, thanks to a joint effort involving helicopter-drops and unstinting hard labour – planting seedlings, stabilising soil, blocking gullies – much of it voluntary.

Paths have been restored, birds, ecology and vegetation surveyed, festivals and competitions held, and a pioneering Moorland Centre built, covering education, information and research.



Helicopter dropping supplies of seed

The Moors for the Future Partnership 2003-2006 (backed by £3m Heritage Lottery funding) involved *11 major organisations. It is now looking for new funding partners to carry on the second phase (call 01629 816581 or go to www.moorsforthefuture.org.uk).

Chris Dean, project manager, said: "Our aim is to secure the legacy of 8,000 years of moorland life, to raise awareness and a sense of responsibility for the moors, to restore and conserve them, and develop expertise on how to protect them for the future."



**First phase partners: Peak District National Park Authority, National Trust, English Nature, United Utilities, Severn Trent, Yorkshire Water, Sheffield City Council, Moorland Association, Defra, Country Land and Business Association & National Farmers' Union.*

Pioneering Moorland Centre

When he officially opened the £1 million Moorland Centre, the Duke of Devonshire said it was absolutely vital.

"Everything in this wonderful new building has been designed to match the requirements of the people who love the uplands," he said. "Education facilities are high on the priorities here and rightly so."

The centre, with its insulating roof of sedum turf and waterfall, reflects its moorland setting, and is powered by renewable energy (fittingly from the earth) – a ground-source heat pump.

It combines a visitor centre and research base with education and community facilities, and is the only centre in the country dedicated to moorland landscapes.

For podcast self-guided trails around the moorlands, go to www.moorsforthefuture.org.uk & click on Audio Trails.



New turf-roofed Moorland Centre, Edale



Duke of Devonshire and Moors for the Future chair Lynn Crowe open the Moorland Centre, Edale



Q & A guide to planning

Planning in a national park is extra-special because of the way the Park looks, its way of life, heritage and wildlife conservation – and property development is a crucial component of that. The Park's landscape, environment, traditional features, social wellbeing and economy are at the heart of planners' thinking.

How do I find out if I need planning permission?

Online: www.peakdistrict.gov.uk/planning - go to Guidance Notes.
Phone: Customer Services - 01629 816361.
Visit or write to: Planning Service, Peak District National Park Authority, Aldern House, Baslow Rd, Bakewell, Derbyshire, DE45 1AE.
E-mail: customer.service@peakdistrict.gov.uk

Can I ask for advice before making an application?

Yes – planning officers can advise on the designs, materials or type of development most likely to succeed.

How do I make a planning application?

On paper: request forms and details of fees and other documents required (contact details above).
Online: www.peakdistrict.gov.uk/planning - click on Making an Application in left-hand column (includes facility for fee-payments).
Or go direct to www.planningportal.gov.uk

What happens next?

You receive an application number and the name of your planning officer. He/she will contact you if changes are needed, consult interested parties, and advertise if necessary. Decisions on straightforward applications are dealt with by planning officers themselves. More complex ones (around 10% of all applications) go to the planning committee.

Can I speak at the planning committee?

Yes – by notifying us at least three working days in advance.

Can I give my view of other people's planning applications?

Yes – by letter, or on the website: www.peakdistrict.gov.uk/planning or by speaking at the planning committee.

When will I know the committee's decision?

We try to inform applicants within three working days. Decisions are also detailed in the minutes, at www.peakdistrict.gov.uk - click on Committee Meetings.

What about appeals?

Must be made within six months, online at www.planningportal.gov.uk or on paper – forms available from the National Park Authority.

Who deals with Buildings Regulations approval?

Your local district or borough council.

Who deals with highways matters?

Your county or metropolitan borough council.

What if I think someone has breached planning controls?

Let us know, by letter, or e-mail devcon@peakdistrict.gov.uk - giving the alleged breach, date, location, and name/address of owner, if known. Your name and address are not essential, but helpful. Investigations are prioritised according to potential harm to the National Park.

What if my property is in breach?

You could put matters right or apply for retrospective consent. If refused, you will be given a time-period to take remedial action. We try to deal with these cases by negotiation, but if all else fails an enforcement notice could be served – you may appeal within 28 days – and it could end up in court. More details: www.peakdistrict.gov.uk then click on 'Living In', 'Planning', then 'Enforcement'.

Last year the Authority received 1075 planning applications, and dealt with 67% of them within eight weeks. Some 80% of applications are approved.



Planning for the future

This year will be a very important one for the future of the Peak District National Park. That's because a series of key policies are being revamped and they will guide the way the National Park is conserved and developed for decades to come.

The policies all combine together into something called the Local Development Framework - or LDF for short.

It will have a huge impact on the future of local communities, housing, the rural economy and high profile issues like quarrying.

Before it is finalised there will be a chance for everyone to have their say, and over the coming months we will publicise the opportunities for consultation - but first, here is a brief run down of what it's all about...

How will it work?

The Local Development Framework will help the National Park Authority reach important decisions about the future use of land. For example, planning applications for everything from affordable housing to renewable energy schemes will be looked at in the light of the guidance.



Dealing with traffic pressure



What is the future for farming



A strong economy



How do we ensure affordable local housing?

What will the LDF include?

- A 'Statement of Community Involvement' setting out the steps we will take to consult people in setting up the framework
- A 'Core Strategy' which will look at land-use, guiding development to the most appropriate locations and protecting the more sensitive areas.
- Detailed development control policies that will guide decisions on planning applications
- Documents about specific areas, such as sites that might be set aside for affordable housing
- Supplementary Planning Documents. These are documents giving more detailed guidance about important issues such as building affordable housing.

What will the LDF focus on?

Future of the landscape. How much control should be exerted to conserve the National Park landscape?

Housing. How far should the Authority's policies go to help deliver more affordable housing? What should the balance be between more housing and the pressure to protect open spaces and the character of villages?

Rural economy. What is the future for farming? How far can farm diversification go?

Transport. How can we cope with increasing congestion? Many locals rely on transport for work, leisure or shopping - how can their needs be met?

Quarrying. What level of quarrying - if any - is acceptable in a National Park?

What happens next?

There will be consultation events during 2007 to help us shape the Core Strategy. A formal independent examination will take place in 2008. Work will also start on the detailed documents mentioned on this page.

Thanks for helping 'Shape the Future'

'Help Shape the Future' - the biggest consultation in the Peak District National Park's history - will culminate soon with the publication of the National Park Management Plan.

The plan will be used by many organisations to guide the management of the National Park.

To find out more visit www.peakdistrict.gov.uk/helpshapethefuture

News Round-up....

Quarry public inquiry

A long-awaited public inquiry into Backdale quarry on Longstone Edge, near Bakewell, is due to start on February 13.

Landowner Bleaklow Industries Ltd and operator MMC Mineral Processing Ltd are appealing against the National Park Authority's stop notice.

The Authority argues that the operators were extracting limestone beyond the scope of their 1952 planning permission. This, the Authority



Backdale Quarry

believes, was doing irreparable harm to the landscape and wildlife habitats.

The inquiry will decide whether the Authority's action was right.

Last July the operators started working a neighbouring site under the same permission. Meanwhile Authority leaders have been meeting Government ministers to press for a long-term solution, including closing a loophole in the law.

Popular Peaks

A survey of 30,000 National Park visitors found that 99% enjoyed their visit and 97% said they were likely to return.

The survey, carried out by the Authority, also found that a quarter of visits involved an overnight stay – half of those in the National Park. On the downside for the local economy, one third of visitors did not spend anything while here – though the average spend was £9.65.

The most popular activity was walking, and half of visitors came at least every three months. The most under-represented age-group was 16-24.

The full survey can be seen on www.peakdistrict.gov.uk - click on Publications.



Dove Dale

Award for Walks book

"Heritage Walks" – a book of self-guided trails around some of the National Park's most historic sites – has won the Friends of the Peak District's Countryside Design Award. The book, published by the BESST project, with text by National Park senior archaeologist John Barnatt and photos by Ray Manley, also encourages visitors to buy local produce and use accommodation along the way.

The judges said the guide was thoroughly-researched, accurate, entertaining, user-friendly and helped the economy (£9.99 from bookshops and visitor centres). BESST (Business & Environment linked through Small Scale Tourism) is an EU-supported, international project helping small tourism businesses use their special local environment as a business asset. Visit www.besst.org



A628 bypass inquiry delay

Residents have another chance to comment on a proposed A628 bypass – a Highways Agency scheme to relieve congestion in Mottram, Hollingworth and Tintwistle.

A public inquiry scheduled for early 2007 was put back, owing to a high level of objections to the proposed scheme – 1,400. There were 1,000 letters of support.

The inquiry is now expected in May, with the Highways Agency having to produce a revised Environmental Statement. New responses can be made, but responses raised in the first consultation will still stand.

The National Park Authority objected, due to the potential harm to the landscape, ecology and tranquillity caused by a projected 133% rise in traffic. The A628 runs alongside a Special Area of Conservation and is crossed by four national walking, cycling and riding trails.

Comments to: Secretary of State for Transport, Highways Agency, Room 710, Piccadilly Plaza, Manchester M1 4BE.



Countryside Volunteers

"You get a sense that you're helping the countryside," says volunteer Naomi Wilds, from Derby. "I work in an office during the week, and it's great to get out and do something practical. You've a real sense of achievement – and you meet some very nice people."



Naomi at work

Naomi is East Midlands literature co-ordinator and joined the National Park's Countryside Volunteers to help at weekends on projects such as path-restoration, wall-building or installing gates.



Many others – including retirees and students – take part. Sarah Harlen, of Macclesfield (left) who works for Revenue and Customs, says: "I love being outdoors, doing practical work – I've learned a lot of new skills. I've always been a walker, so it's nice to put something back into the countryside."



The volunteers go out in groups with a supervisor. Training and equipment is given – all you need are old, sturdy clothes, a packed lunch, and your enthusiasm. Research suggests that over 82% of National Park visitors were willing to become involved in caring for it.

For more details: www.peakdistrict.gov.uk and click on Looking After; then Rangers, then Countryside Volunteers. Or call 01629 816290.



Volunteer 'taster day'



Friends of the Peak District

Friends of the Peak District, an independent charity, engages in vigorous campaigning to safeguard the Peak District's unique landscapes.

It works to influence decision-makers on developments such as homes, businesses, roads and telecoms masts – balancing the needs of the local community with the protection of natural beauty.

If you want to help, you can become a Friend of the Peak District. For £2 a month, you receive a quarterly magazine, Peakland Guardian, reduced entry to local attractions, guided walks, talks, conservation days, and regular updates on key campaigns and issues.

Or you could join Friends of the Peak District volunteers. You could help by investigating planning applications, providing administrative support, carrying out practical conservation work, organising events, attending local shows and recruiting new members.

To find out more, ring 0114 266 5822 or visit www.friendsofthepeak.org.uk

Vision for Wildlife Project

Residents from a central area of the National Park have got involved in the Vision for Wildlife Project, which works closely with farmers and local communities.

Activities include children helping to spread seed to create wildflower-rich haymeadows, adults clearing and restoring ponds, and local people surveying road verges and green lanes. The aim of the Project is to enhance, extend and link high-value wildlife habitats.

To find out more, call 01629 816397 or e-mail visionproject@peakdistrict.gov.uk or visit www.peakdistrict.gov.uk/vision-project.htm



We're here to help – so get in touch!

Whenever you have a comment or question about the work of the Peak District National Park Authority, our Customer Service team is here to help. You can:

Phone **01629 816200**

Email customer.service@peakdistrict.gov.uk

Fax **01629 816310**

Visit www.peakdistrict.gov.uk

Minicom **01629 816319**

You can also write to: Aldern House, Baslow Road, Bakewell, Derbyshire DE45 1AE. - or call in during office hours

Our reception and public areas have recently been updated, with improved access, including better facilities for disabled people.



National Park Authority Members...

National Park Authorities are controlled by Members – they act like councillors, though they are appointed, either by the Government or their own councils. Currently the Peak District has 38 Members, dedicated to conserving and enhancing the National Park.

All Members can be e-mailed by using the formula: firstname.surname@peakdistrict.gov.uk

Chair of the Authority

Tony Hams OBE

Government-appointee

Tel: 01298 871790



Deputy Chair

Hilda Gaddum

Macclesfield Borough Council

Tel: 01260 252456



Council appointees

Jacque Bevan

Derbyshire Dales District Council

Tel: 01433 650581

Terence Bristowe

Barnsley Metropolitan Borough Council

Tel: 01226 215151

Paul Broadhead

N.E. Derbyshire District Council

Tel: 01246 861042

Tracy Critchlow

Derbyshire Dales District Council

Tel: 01298 872012

Catherine Hunt

Derbyshire Dales District Council

Tel: 01433 630226

Colin McLaren

Oldham Metropolitan Borough Council

0161 627 4197

David Mellor

High Peak Borough Council

Tel: 01663 742670

James Muir

Staffordshire County Council

Tel: 01283 544477

Ronald Priestley

High Peak Borough Council

Tel: 01433 620376

Irene Ratcliffe

Derbyshire County Council

Tel: 01629 823023

Lionel Richardson

Staffordshire Moorlands District Council

Tel: 01538 266496

Sylvia Roberts

Cheshire County Council

Tel: 01625 575306

Kenneth Stevenson

Derbyshire County Council

Tel: 01909 721403

Barrie Taylor

Derbyshire County Council

Tel: 01663 732334

Judith Twigg

Derbyshire Dales District Council

Tel: 01629 813292

Garry Weatherall

Sheffield City Council

Tel: 0114 2735588

Roger Wilkinson

Derbyshire County Council

Tel: 01457 866531

Barbara Wilson

Derbyshire County Council

Tel: 01298 70562

Government appointed members

Anne Ashe

Tel: 0114 266 1512

Narendra Bajaria

Tel: 0114 230 7825

Pauline Beswick

Tel: 01433 631256

Adrian Brown

Tel: 01457 832271

Lynn Crowe

Tel: 01298 871827

Barry Neville

Tel: 01158 471941

Christopher Pennell

Tel: 0114 235 1568

Sue Prince

Tel: 01335 310274

Leigh Rix

Tel: 01909 486411

Parish members

Tom Bunting

Eaton & Alsop and Newton Grange

(Derbyshire Dales)

Tel: 01335 310258

Michael Crompton

Hayfield (High Peak)

Tel: 01663 744248

Claude Fearn

Heathley (Staffordshire Moorlands)

Tel: 01298 83268

Christopher Furness

Bradwell (Derbyshire Dales)

Tel: 01433 621811

Peter Harrison

Chapel-en-le-Frith (High Peak)

Tel: 01298 812081

John Herbert

Sheldon (Derbyshire Dales)

Tel: 01629 814229

Kath Potter

Rowsley (Derbyshire Dales)

Tel: 01629 734320

Hilary Young

Bakewell (Derbyshire Dales)

Tel: 01629 812597

Chairs of committees

Planning Committee

Chair - Narendra Bajaria

Vice Chair - Barbara Wilson

Services Committee

Chair - Barrie Taylor

Vice Chair - Lynn Crowe

Audit and Performance Committee

Chair - Peter Harrison

Vice Chair - Tracy Critchlow

Member Representatives

Affordable Housing: Christopher Furness

Equalities: Barbara Wilson

Asset Management: Peter Harrison

Historic Environment: Pauline Beswick

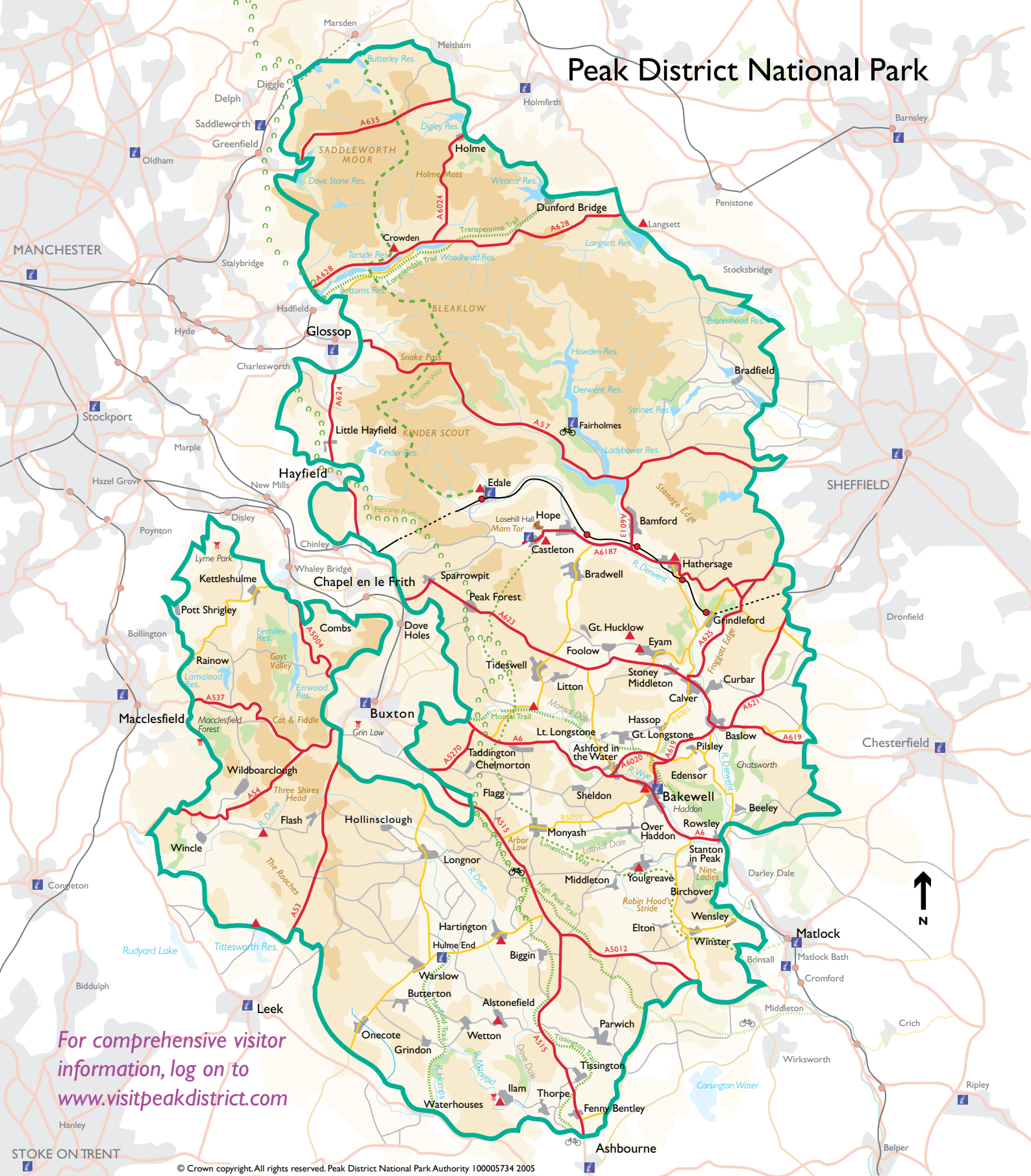
Implementing electronic government:

Adrian Brown

Sport & Recreation: Barry Neville

Transport: Anne Ashe

Peak District National Park



	National Park Boundary		Railway and Station		Pennine Bridleway		Information Centre		Settlement
	Land over 400 metres		Railway Tunnel		Pennine Way		Cycle Hire		Reservoir
	Land over 300 metres		A Road		Trail		Youth Hostel		Woodland
	Land over 200 metres		B Road		Limestone Way		Country Park		
			Minor Road						

0 Kilometres 5

Peak District National Park Visitor
Enquiry Line 01629 816558
Bakewell and Castleton Visitor Centre
Tel: 01629 816558
Upper Derwent Valley Tel: 01433 650953
Moorlands Centre, Edale Tel: 01433 670207

Tourist Information Centres
Ashbourne Tel: 01335 343666
Barnsley Tel: 01226 206757
Buxton tel: 01298 25106
Chesterfield Tel: 01246 345777
Glossop Tel: 01457 855920
Holmfirth Tel: 01484 222444

Leek Tel: 01538 483741
Macclesfield Tel: 01625 504114
Matlock Tel: 01629 583388
Matlock Bath Tel: 01629 55082
Saddleworth Tel: 01457 870336
Sheffield Tel: 0114 281 4040
Stockport Tel: 0161 474 4444