



## #PeakDistrictConnect

For kids!

Here's one way you can connect to the National Park on your walk:

### 5,4,3,2,1 Activity

Spot 5 things that you can see, 4 things that you can hear, 3 things that you can touch, 2 things that you can smell and 1 thing that you like

For more child-friendly activities go to [peakdistrict.gov.uk/connect](http://peakdistrict.gov.uk/connect)

Family walk 5

Explorer

# Crowden Valley

Explore this beautiful valley on the route of the Pennine Way

## Your walk details

Distance	1.2 miles/2km
Duration	1 hour
Buggy friendly?	No
Dog friendly?	Yes, but please keeps dogs on a lead – sheep graze in the area around the river
Facilities	Car parking, toilets
Extra information	The walk is on a mixture of tarmac lanes and rough tracks

### Start from here

#### Crowden car park

The car park is signposted off the A628 (Woodhead Pass)



Postcode (satnav)	SK13 1HZ
Grid ref	SK 072 992
What3Words	incisions.lucy.gearing

## Be Peak District Proud

[www.peakdistrictproud.co.uk](http://www.peakdistrictproud.co.uk)

Keep your dog on a lead to avoid disturbing birds that nest on the ground and other wildlife.



Be prepared. Weather conditions can change quickly and phone signal varies.



Leave no trace. Use bins for litter and dog waste, or better still take it home with you.



Stick to your rights of way whichever way you access the park, by foot, bike or horse.



Use the gates and stiles provided. Close and re-latch gates you have opened.



Be Dronesafe. Unauthorised drone use is against the law.



Camp fires, BBQs and naked flames are not permitted. Picnics are great, but please take your rubbish home.



Look and listen. Discover the wildlife and its habitat around you.



Drive with care and park in designated car parks.



### Get in touch

[www.peakdistrict.gov.uk/visiting](http://www.peakdistrict.gov.uk/visiting)  
[www.nationalparks.uk/visit-us](http://www.nationalparks.uk/visit-us)

### Find further walks at

[www.peakdistrict.gov.uk/familywalks](http://www.peakdistrict.gov.uk/familywalks)



Photos: Peak District National Park / Pete Bush;  
Simon Atherton; AdobeStock





# Crowden Valley

Explore the beautiful Crowden Valley, with its rivers, woodlands and rocky hills. There is a picturesque place to picnic and a great place to play in the stream.



- 1 Take the tarmac path at the corner of the car park, next to the information board.
- 2 When you reach the public toilets, turn right on the path and pass the campsite.
- 3 By the entrance to the campsite, continue straight ahead to cross the lane and go through a gate, following the tarmac track which heads towards Crowden Outdoor Education Centre.
- 4 At a fork, leave the tarmac track to follow the grassy track heading uphill to reach a stile and a gate. Turn left in front of these, passing through a metal gate. Continue on this narrow path beside a water channel.

### Did you know?

On your walk you will pass through the edge of Brockholes Wood nature reserve. 'Brock' is an old name for a badger. Can you see any badger holes?



- 5 At the end of the path, go through the gate and turn right on the rocky track, which crosses a stone bridge and bends to the left, passing Brockholes Wood nature reserve. Continue on the track to a gate.
- 6 Go through the gate and turn immediately left to cross the wooden bridge over the river (Crowden Little Brook) onto a flat, grassy area. This is a lovely spot for a picnic (please take your rubbish home), and the stream is great for paddling.

- 7 To reach a fantastic viewpoint, bear right after crossing the bridge and head for the metal gate. Cross the stile next to the gate and follow the track as it zigzags uphill to a flat, rocky spot.

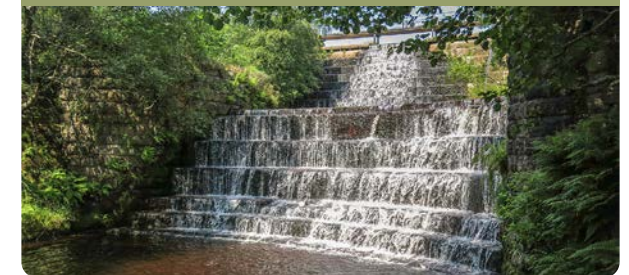
### Look out for...

Two rivers meet in the Crowden Valley: Crowden Great Brook and Crowden Little Brook. Can you see both of them from the viewpoint on the hill?

- 8 Retrace your steps down the hill, across the bridge and through the gate to the right. Continue along the track, following as it curves to the right and heads downhill. Keep on the track to a junction with a tarmac lane.

### Look out for...

On your way back, once you have crossed the stone bridge and heading downhill, look out for a narrow path on your right, taking you to the bottom of the weir and a shady picnic spot.



- 9 Turn left along the lane, and retrace your steps back to the car park.

### Did you know?

The water in the rivers at Crowden flows out into Torside Reservoir, and eventually makes its way to the River Mersey and the Irish Sea. It also provides drinking water for Manchester.