

Charlesworth Parish Statement (draft)



Photo needed here

The parish of Charlesworth is located to the south and east of Glossop. Charlesworth settlement is located outside the National Park, to the southwest of Glossop.

The parish of Charlesworth is characterised by limestone village farmlands located within the Dark Peak landscape area (Landscape Strategy Action Plan 2009).

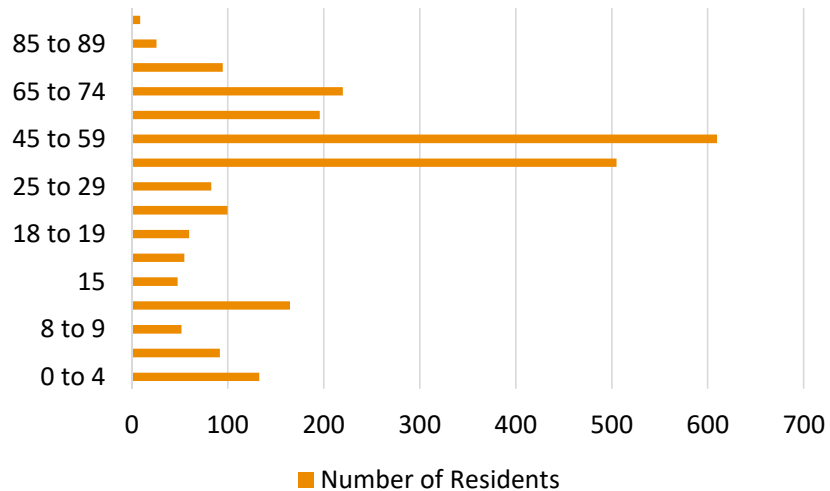
Charlesworth
Parish Statement (draft)



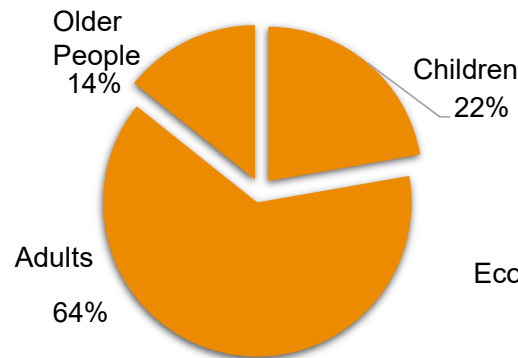
Community aspirations

Population and Demographics

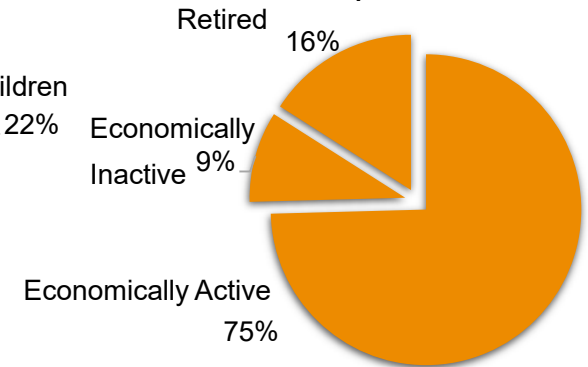
Population Age Range



Children, Adults and Older People



Working and Non Working Adult Population (18+ years)



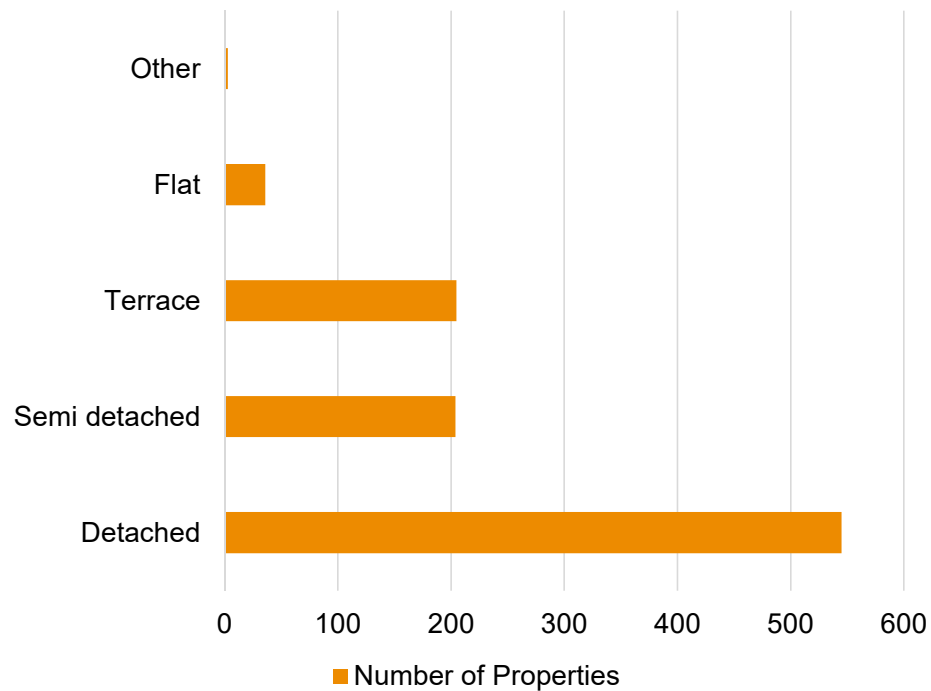
KEY
Children 0-17 years
Adults 18-64 years
Older People 65 years +

The parish of Charlesworth has a population of 2,449 residents (2011 census).

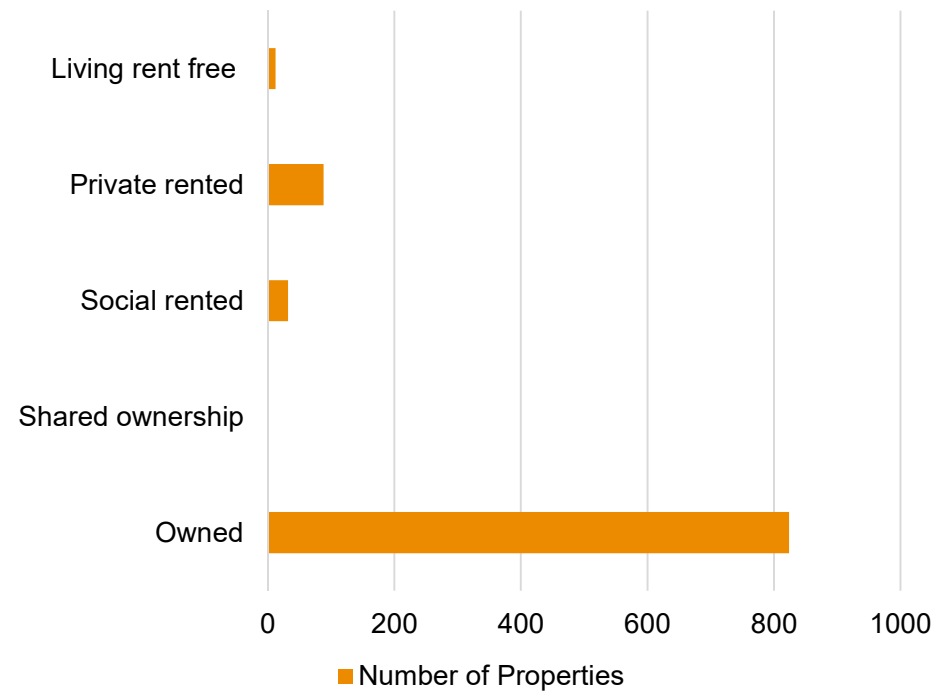
Source: Census 2011

Housing

Housing Type



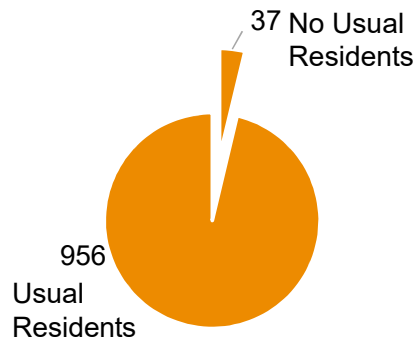
Housing Tenure





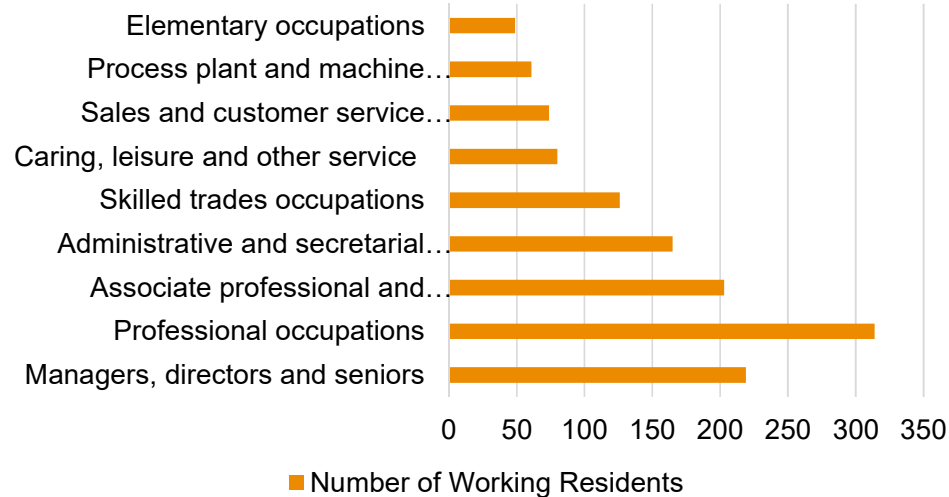
Residency

Occupancy of Properties



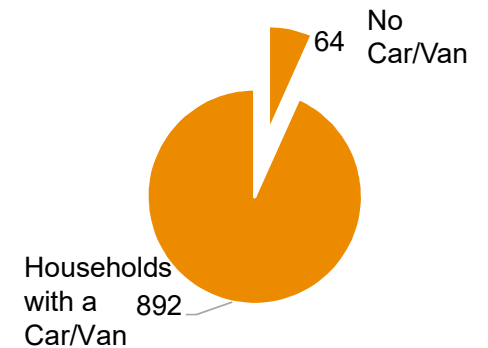
Employment

Occupations of Working Adults



Car/Van Ownership

Households with a Car/Van



Charlesworth
Parish Statement (draft)



Public Transport

Service	Route	Bus Company	Days	Frequency
341	Glossop—Hyde	Stotts	Mon— Sat	Mon-Fri, 07:58-17:32. Approx every hour. Sat, 08:12—17:12. Approx every hour.
394	Glossop— Stepping Hill Hospital	High Peak	Mon—Fri	Mon—Fri, 06:51- 16:55. Approx every 2 hours.

Amenities

Amenity matrix to be completed

Planning

Over the last 5 years 20 planning applications have been approved in the parish. (within the national park boundary)

Digital Presence

<https://www.charlesworthparishcouncil.org.uk/>

Affordable Housing

There are currently no plans to build affordable housing within the parish.

Community (tbc)

General	
Events/ traditions	

Charlesworth
Parish Statement (draft)



Charlesworth and its Services

PDNP to update with a map
showing the services in
Charlesworth

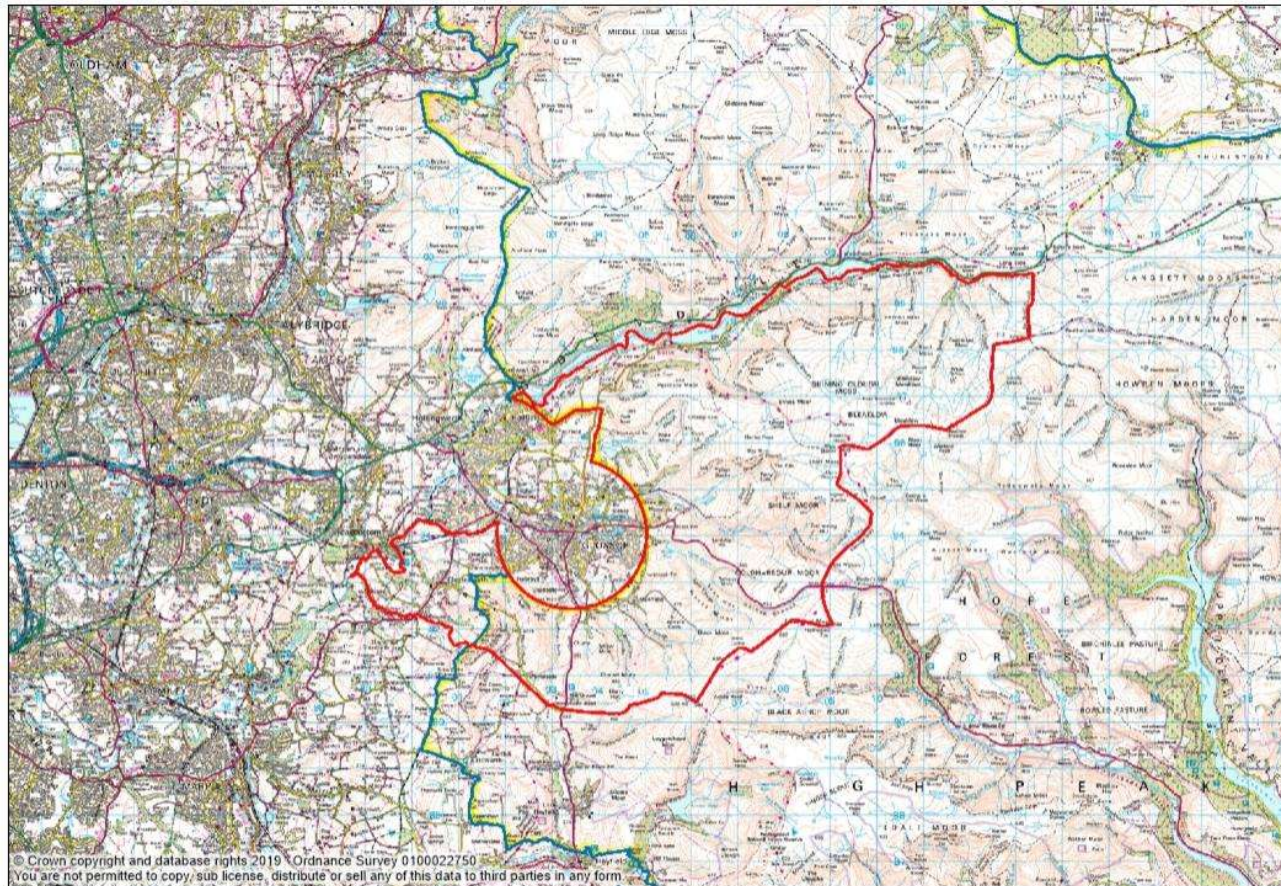
Key

-  A1 Shops
-  A2 Financial and Professional Services
-  A3 Restaurants and Cafes
-  A4 Drinking Establishments
-  A5 Hot Food Takeaways
-  B1 Business
-  B2 General Industrial
-  B8 Storage or Distribution
-  C1 Hotels
-  C2 Residential Institutions
-  C2A Secure Residential Institution
-  C3 Dwellinghouses
-  C4 Houses in Multiple Occupation
-  D1 Non-Residential Institutions
-  D2 Assembly and Leisure
-  Camp Site
-  Allotments
-  Playground
-  Playing Field
-  Public Car Park
-  Sui Generis
-  Bus Stop
-  Notice Board
-  Post Box
-  Telephone Box
-  Cash Point
-  Public Toilets
-  Defibrillator

Charlesworth
Parish Statement (draft)



Charlesworth Parish Boundary
(national park boundary shown by blue/yellow line)



Charlesworth
Parish Statement (draft)



Data sources

Peak District National Park Conservation Area Appraisals
Peak District National Park Landscape Strategy Action Plan (LSAP)
www.nomisweb.co.uk
Ordnance survey maps
<http://www.derbybus.info/times/timetables/216Y-180325.pdf>